

# Our Product Catalogue



“It’s the effort we put in that minimises stress for our customers, from early consultation to on-time delivery.”

**Ben Simpson**  
General Manager, DuraCube

When performance matters, DuraCube is the reliable choice for builders and architects across the country. We deliver systems as specified and on time. And best of all, DuraCube is backed by a supportive team of specialist consultants who are there if you need them.

## Contents

<b>Introduction</b>	<b>6</b>	<b>Section 4: Bench Seating</b>	<b>64</b>
Product Range Inclusions	6	Overview	66
Our Customer Promise	6	Bench Seating – Island (BSI)	67
Process and Locations	7	Bench Seating – Wall with Shelving (BSW-S)	68
		Bench Seating – Wall with Coat Rail (BSW-C)	69
<b>Section 1: Partitioning Systems</b>	<b>8</b>	Bench Seating – Shoe Box Island (SBI)	70
Pedestal Mount Overhead Braced (POB)	10	Bench Seating – Shoe Box Wall with Shelving (SBW-S)	71
Pedestal Mount Ceiling Fixed (PCF)	14	Bench Seating – Shoe Box Wall with Coat Rail (SBW-C)	72
Floor Mount Overhead Braced (FOB)	18		
Floor Mount Ceiling Fixed (FCF)	22	<b>Section 5: Vanities</b>	<b>74</b>
Floor Mount Free Standing (FFS)	26	Overview	76
Full Height Privacy Core (FHPC)	30	Vanity Bench – Inset (VB520)	78
Full Height Privacy Ultra (FHPU)	34	Vanity Bench – Semi-Recessed (VB350)	79
Full Height Privacy Max (FHPM)	38	Vanity Cabinet – Inset (VCWM520)	80
		Vanity Cabinet – Semi-Recessed (VCWM350)	81
<b>Section 2: Privacy Panels</b>	<b>42</b>	<b>Section 6: Compact Laminate</b>	<b>82</b>
Overview	44	Overview	84
Privacy Panels – Wall Mount (PWM)	45-47	Colour Range	85
Privacy Panels – Pedestal Mount (PPM)	45-47	Cut to Size Service	86
Privacy Panels – Childcare (PCC)	45-47		
Privacy Panels – Full Height (PFH)	45-47	<b>Section 7: Accessories / Hardware</b>	<b>88</b>
Privacy Panels – Post Fixed (PPF)	45-47	Accessories	90
		Hardware	90-91
<b>Section 3: Locker Systems</b>	<b>48</b>	<b>Contact</b>	<b>92</b>
Overview	50		
Lockers – Plinth Mounted (LPM)	51		
Lockers – Wall Mounted (LWM)	52		
Lockers – Bench Mounted (LBM)	53		
Lockers – Shoe Box Mounted (LSBM)	54		
Lockers – Shoe Box Seating Mounted (LSBSM)	55		
Lockers – Plinth Mounted End-of-Trip (LPM-EOT)	56		
Lockers – Wall Mounted End-of-Trip (LWM-EOT)	58		
Lockers – Shoe Box Mounted End-of-Trip (LSBM-EOT)	60		
Lockers – Accessible Ironing Station (AIS)	62		

COVER IMAGE  
DuraSafe 5003 Phillipine Teak, and DuraSafe 279 Charcoal

# FIRST FOR DESIGNERS

DuraCube is the ideal design partner for creating contemporary bathroom joinery systems. We offer innovative solutions that combine sleek aesthetics, durable materials, and exceptional functionality.



DuraSafe 111 Arctic White



DuraSafe 268 Evening

**Our diverse range of colours, including timber hues, empowers creative teams to deliver highly sophisticated and visually striking spaces.**



DuraSafe 5003 Southern Pine, and DuraSafe 111 Arctic White



DuraSafe 5003 Phillipine Teak

**Agility sets us apart. We can design and install bathroom joinery systems within weeks.**



DuraSafe 5333 Southern Pine, and DuraSafe 111 Arctic White

**We collaborate with designers and architects to ensure our joinery complements the overall aesthetic.**



DuraSafe 5375 Native Walnut



DuraSafe 5333 Southern Pine, and DuraSafe 111 Arctic White



# DuraCube is a dedicated team of professionals that specialises in providing cost-effective and fit-for-purpose solutions for commercial bathrooms.

We are a wholly owned and operated Australian business that has been providing the construction industry with wet area products and services since 1987.

We collaborate with architects, designers, and builders to design and deliver exceptional bathroom joinery.

From initial design to installation and project close-out, we provide superior customer service and respond quickly to clients' evolving needs. Our tight-knit team handles every detail with care and precision, and a single point of contact ensures a seamless experience.

We manufacture our joinery using DuraSafe Compact Laminate, a 13mm antiviral, antibacterial, and antifungal compact laminate. Machined in our Western Sydney factory, our products are shipped weekly to warehouses across Australia.

## PRODUCT RANGE INCLUSIONS

- Toilet and shower partitioning systems
- Privacy panels
- Locker systems
- Bench seating
- Vanity benches
- Hardware, accessories and locks
- DuraSafe compact laminate cut to size

## OUR CUSTOMER PROMISE

We are committed to providing superior customer service by:

- Using our industry experience and expertise
- Identifying issues and proactively providing solutions
- Communicating through one point of contact
- Supplying quality products
- Delivering our products on time every time

## Locations

DuraCube has offices and depots in New South Wales, Queensland, Victoria and South Australia.



- Supply and Installation
- Supply Only

Founded

Staff Members

Cubicle Production Capacity (Per Week)

1987

50+

1,000+



GRAPHISOFT  
Archicad®



Files available online



Certified



Market leading

# SECTION 1

# PARTITIONING

# SYSTEMS

Pedestal Mount Overhead Braced (POB)	10
Pedestal Mount Ceiling Fixed (PCF)	14
Floor Mount Overhead Braced (FOB)	18
Floor Mount Ceiling Fixed (FCF)	22
Floor Mount Free Standing (FFS)	26
Full Height Privacy Core (FHPC)	30
Full Height Privacy Ultra (FHPU)	34
Full Height Privacy Max (FHPM)	38





DuraSafe Arctic White

The DuraCube pedestal mount overhead braced wet area partitioning system is strong, economical, and designed to minimise material waste.

The system is quick and easy to assemble, reducing installation time.

Pedestal floor mounting allows for easy cleaning with a mop and hose.

**REGULATORY COMPLIANCE**

- NCC 2022 Part F — Deem to Satisfy Provisions
- F4D82c — Door removable from outside if less than 1.2m between pan and doorway

**APPLICATIONS**

- Schools and universities
- End-of-trip facilities
- Shopping centres
- Sport and gym change rooms
- Defence ablution blocks
- Corporate amenities
- Recreational amenities
- Pubs and clubs

**FEATURES & BENEFITS**

- The most cost-effective partitioning system
- DuraSafe 13mm compact laminate construction
- No edge strip required as compact laminate black core is visible on the edges
- Efficient use of materials
- Impact-resistant construction
- Vandal-resistant surface
- Waterproof, suitable for hose cleaning
- Easy to clean and sanitise
- Reduced maintenance time and cost
- Quick and easy installation
- Overall system height 2020mm AFFL

**“The pedestal mount overhead braced partitioning system is strong, quick and easy to install, and easy to clean.”**

**Mark Simpson**  
Founder, DuraCube



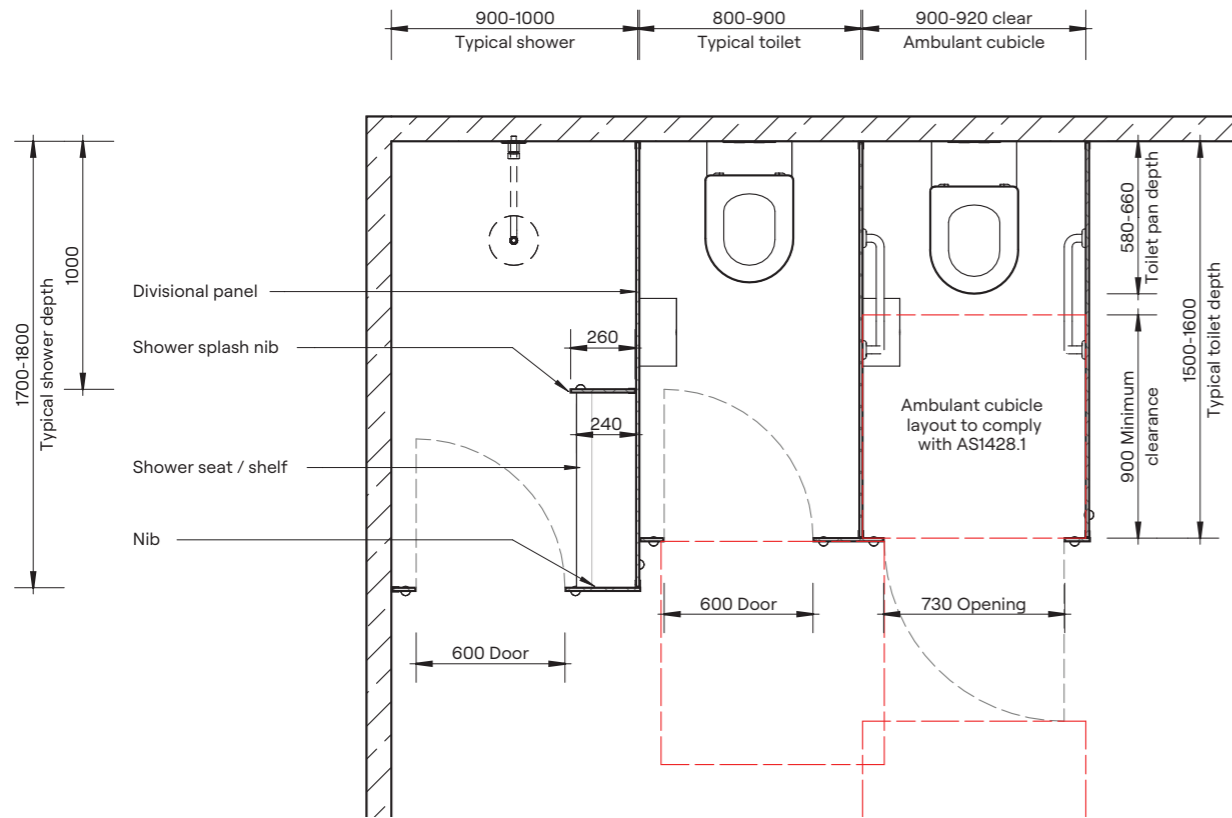
Standard pedestal leg



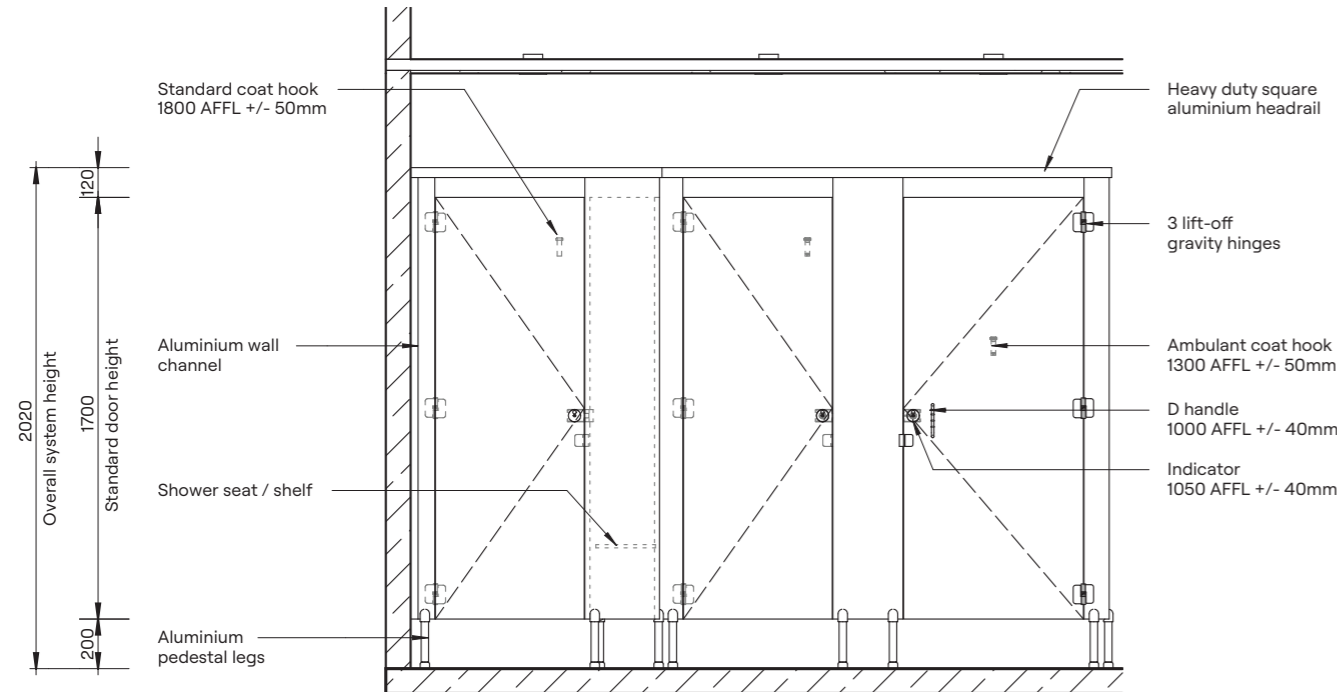
Optional setback pedestal leg



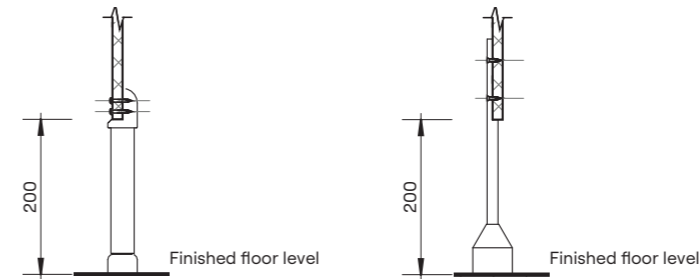
**DuraSafe Compact Laminate**  
All DuraCube panels and doors are constructed with DuraSafe 13mm compact laminate.



Plan

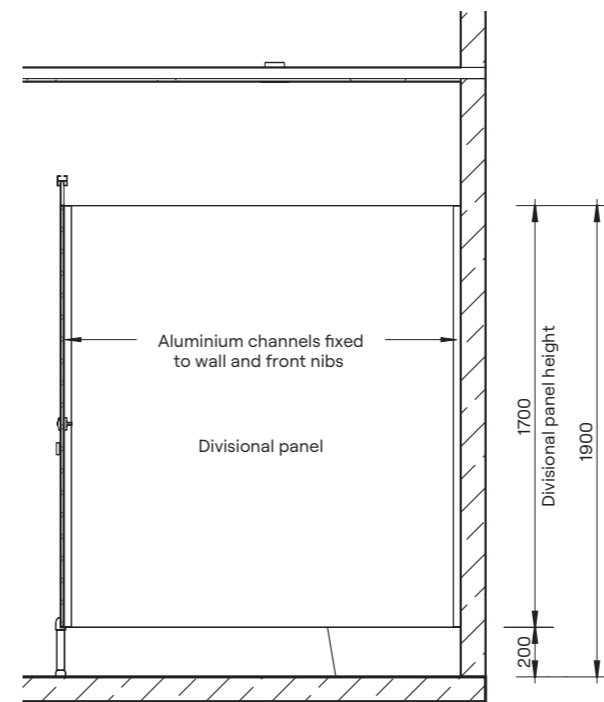


Elevation



Standard Pedestal Mount Detail

Optional Setback Pedestal Mount Detail



Section

“We manufacture our partitioning systems in-house and can deliver high quality products within three weeks from site measurement.”

Athol Simpson  
Operations Manager, DuraCube

**HOW TO SPECIFY**

**Product**  
DuraCube pedestal mount overhead braced (POB)

**Door and Panel Construction Material**  
DuraSafe 13mm compact laminate

**Hardware**  
Viva satin chrome hardware is standard. Other hardware is available – see pages 90-91

**Headrail**  
Aluminium square profile 40mm x 40mm  
Colour – Oyster Grey powder coat

**Floor Mounting**  
Adjustable 200mm aluminium pedestal legs

**Overall System Height**  
2020mm AFFL



DuraSafe 5427 Refresh Oak

The DuraCube pedestal mount ceiling fixed wet area partitioning system is a visually appealing design. All panels are fixed directly to the ceiling while the pedestal legs provide structural strength.

The system is quick and easy to assemble, reducing installation time. Pedestal floor mounting allows for easy cleaning with a mop and hose.

#### REGULATORY COMPLIANCE

- NCC 2022 Part F — Deem to Satisfy Provisions
- F4D82c — Door removable from outside if less than 1.2m between pan and doorway

#### APPLICATIONS

- Schools and universities
- End-of-trip facilities
- Shopping centres
- Sport and gym change rooms
- Defence ablution blocks
- Corporate amenities
- Recreational amenities
- Pubs and clubs

#### FEATURES & BENEFITS

- DuraSafe 13mm compact laminate construction
- No edge strip required as compact laminate black core is visible on the edges
- Efficient use of materials
- Impact-resistant construction
- Vandal-resistant surface
- Waterproof, suitable for hose cleaning
- Easy to clean and sanitise
- Reduced maintenance time and cost
- Quick and easy installation
- Overall system height 2400mm to 3000 AFFL

**“The pedestal mount ceiling fixed partitioning system is a strong system with minimal lines as there is no headrail required.”**

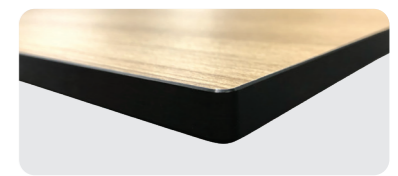
**Kasun Jayasinghe**  
Commercial Manager, DuraCube



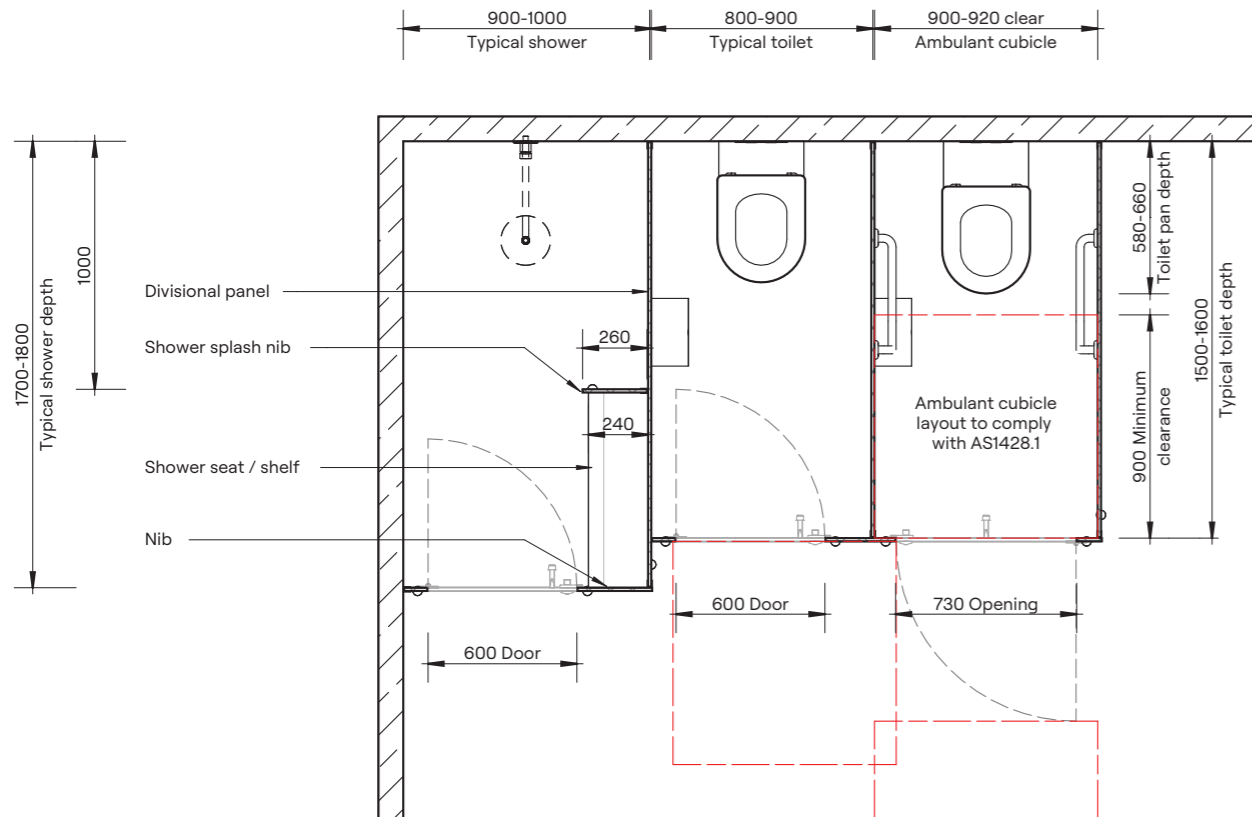
Standard pedestal leg



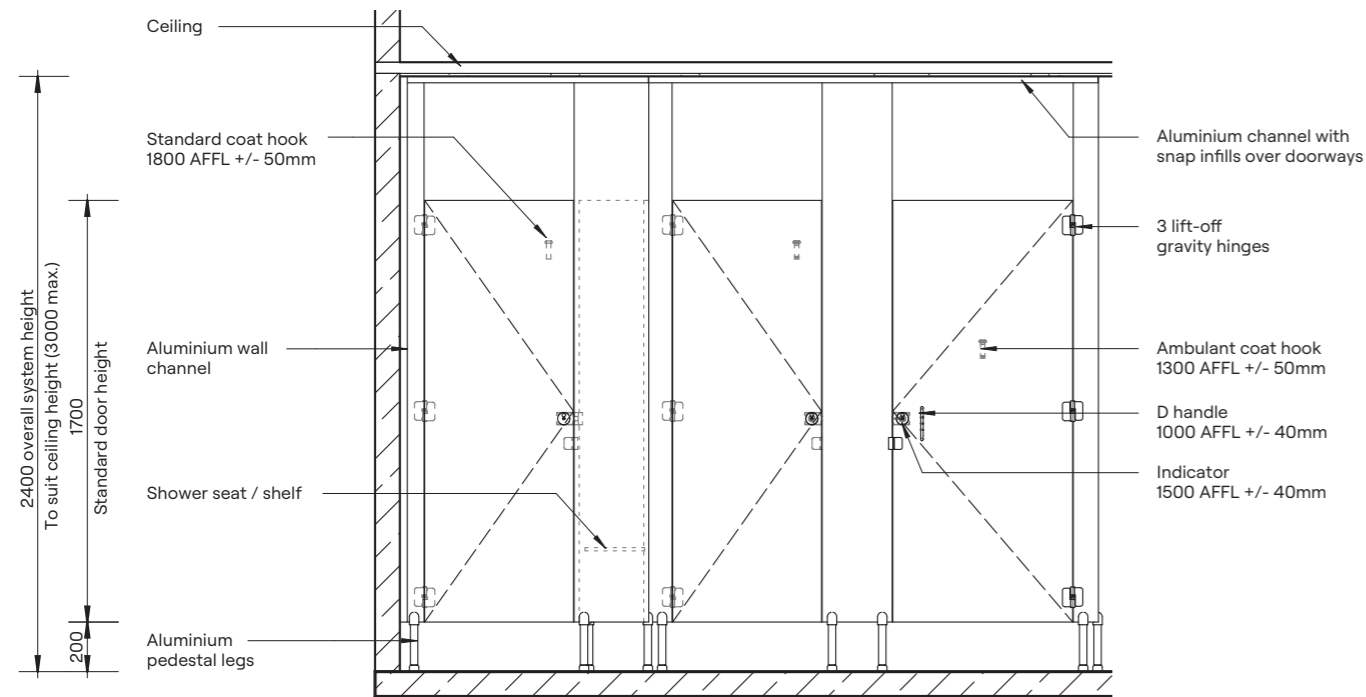
Optional setback pedestal leg



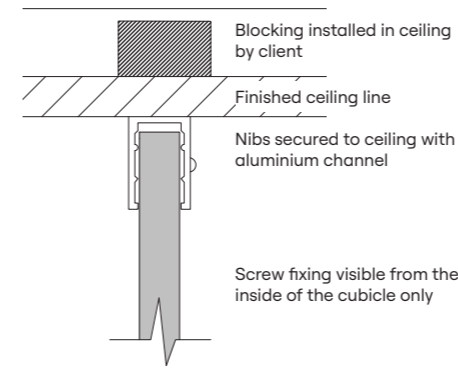
**DuraSafe Compact Laminate**  
All DuraCube panels and doors are constructed with DuraSafe 13mm compact laminate.



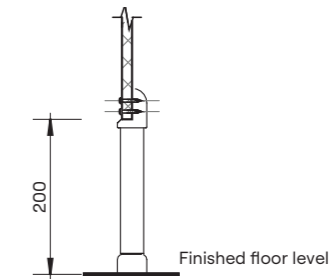
Plan



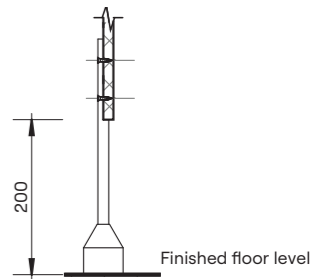
Elevation



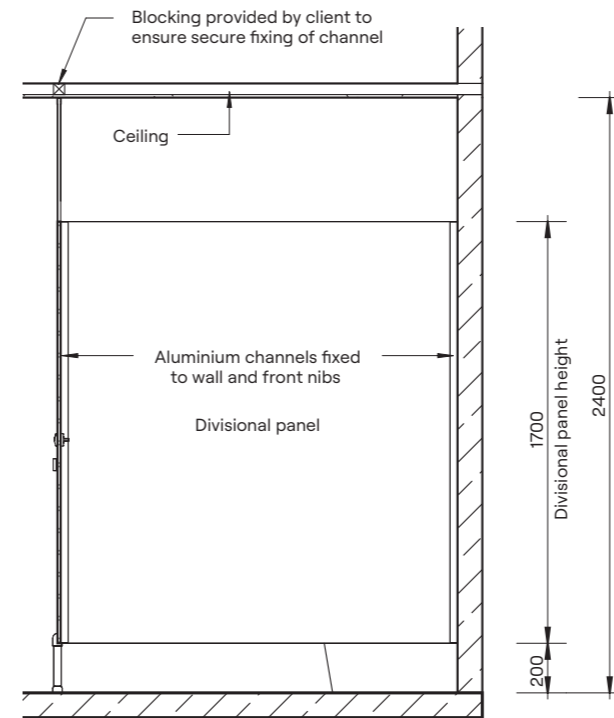
Ceiling Fixing Detail



Standard Pedestal Mount Detail



Optional Setback Pedestal Mount Detail



Section

**HOW TO SPECIFY**

**Product**  
DuraCube pedestal mount ceiling fixed (PCF)

**Door and Panel Construction Material**  
DuraSafe 13mm compact laminate

**Hardware**  
Viva satin chrome hardware is standard  
Other hardware is available – see pages 90-91

**Ceiling Fixing**  
Aluminium C channel 20mm x 30mm fixed to the ceiling  
Colour – Oyster Grey powder coat

**Floor Mounting**  
Adjustable 200mm aluminium pedestal legs

**Overall System Height**  
2400mm to 3000mm AFFL



**Our floor mount overhead braced wet area partitioning system is one of the strongest systems we offer and specifically designed for heavy-duty applications.**

Aesthetically pleasing, it is the ideal solution for schools, end-of-trip facilities and high use corporate bathrooms.

**REGULATORY COMPLIANCE**

- NCC 2022 Part F — Deem to Satisfy Provisions
- F4D82c — Door removable from outside if less than 1.2m between pan and doorway

**APPLICATIONS**

- Schools and universities
- End-of-trip facilities
- Shopping centres
- Sport and gym change rooms
- Defence ablution blocks
- Corporate amenities
- Recreational amenities
- Pubs and clubs

**FEATURES & BENEFITS**

- Nibs mounted to the floor provide stability, strength and durability
- DuraSafe 13mm compact laminate construction
- No edge strip required as compact laminate black core is visible on the edges
- Impact-resistant construction
- Vandal-resistant surface
- Waterproof, suitable for hose cleaning
- Easy to clean and sanitise
- Reduced maintenance time and cost
- Overall system height 2020mm AFFL

**“The floor mount overhead braced partitioning system is robust, ideal for heavy duty applications, and provides a clean timeless appeal.”**

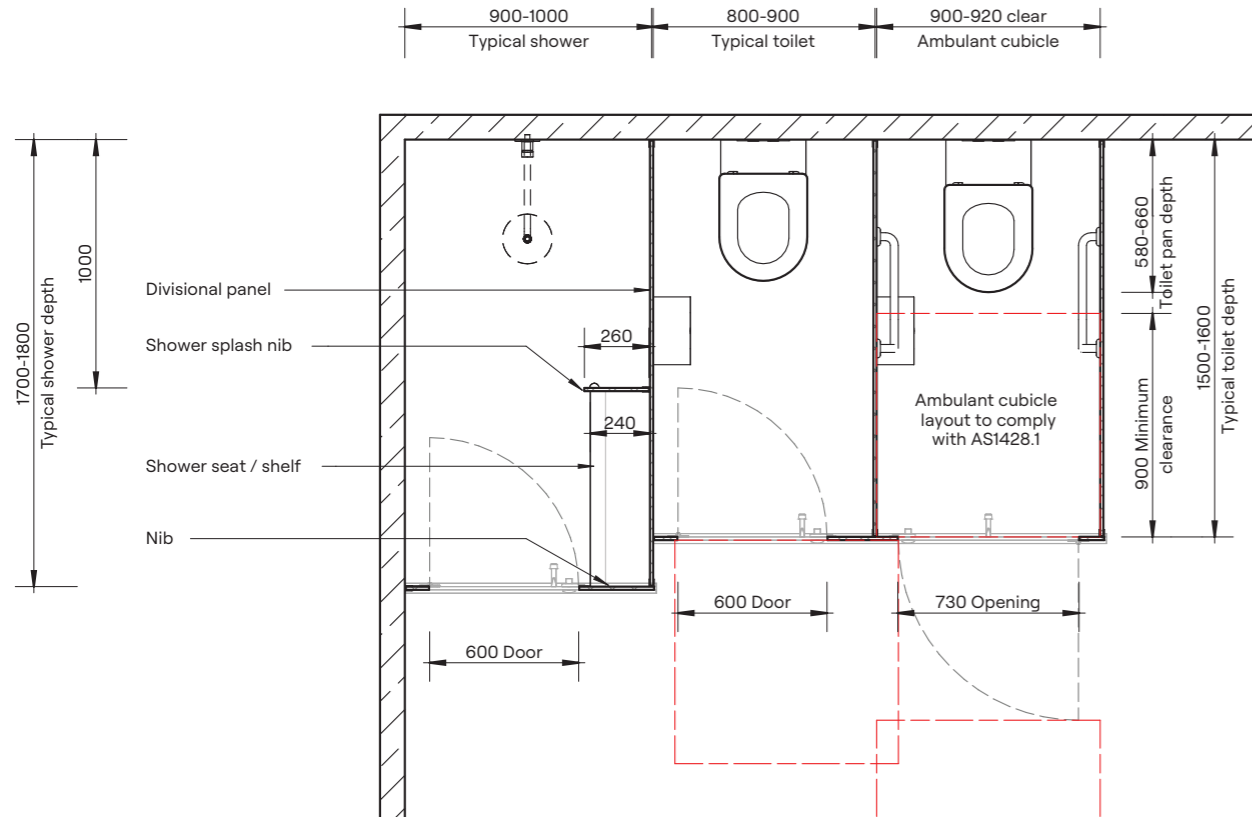
**Rick Kennard**  
Sales Executive, DuraCube



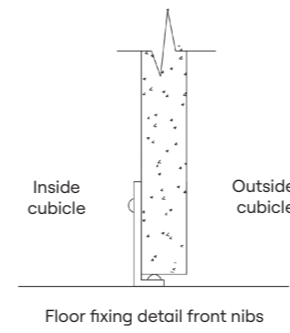
**Note:** This system is only suitable for installation on a concrete sub-floor. Minimum fixing depth is 100mm. Fixings will penetrate the waterproofing membrane.



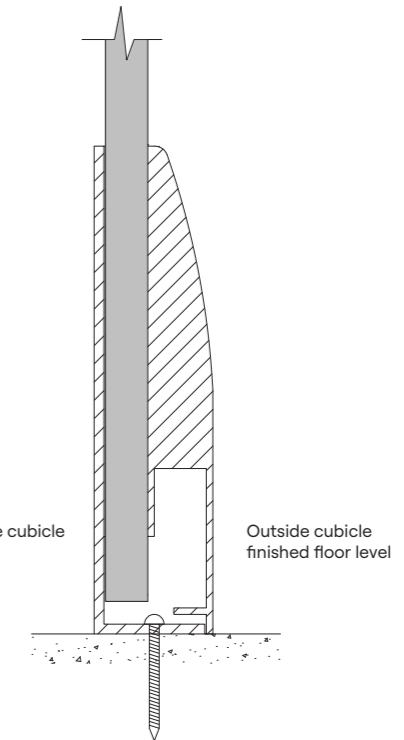
**DuraSafe Compact Laminate**  
All DuraCube panels and doors are constructed with DuraSafe 13mm compact laminate.



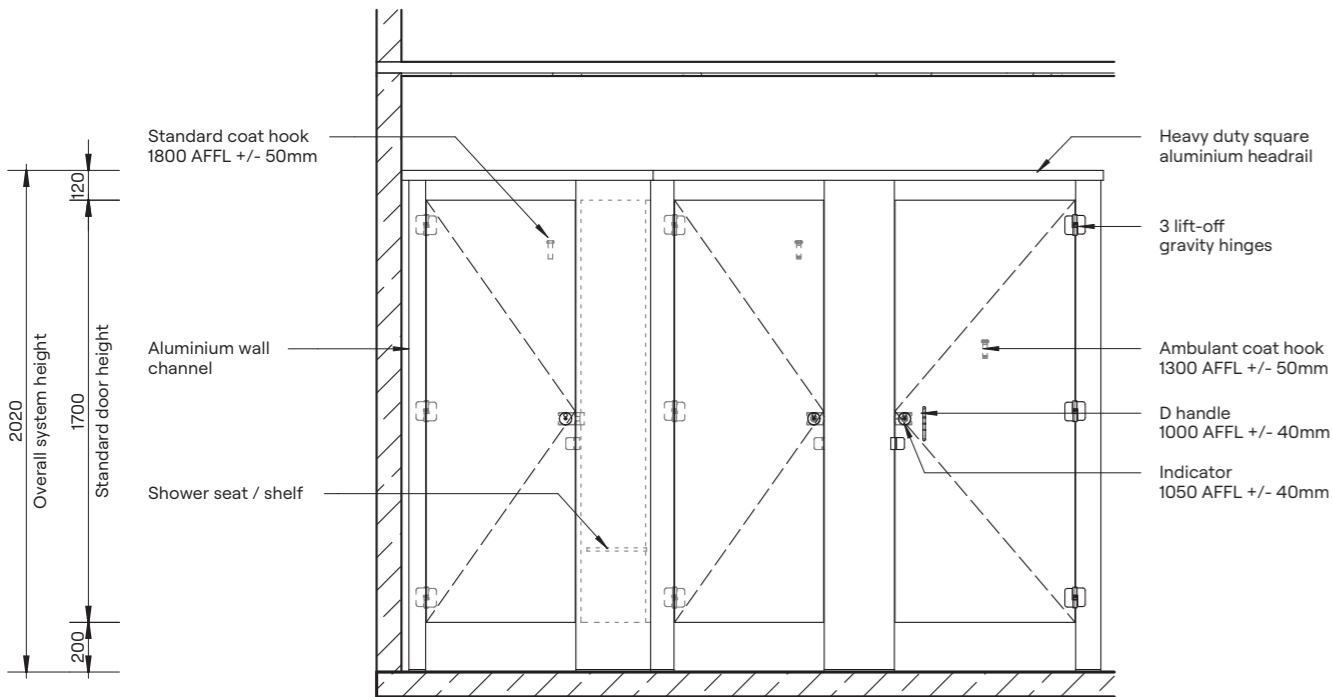
Plan



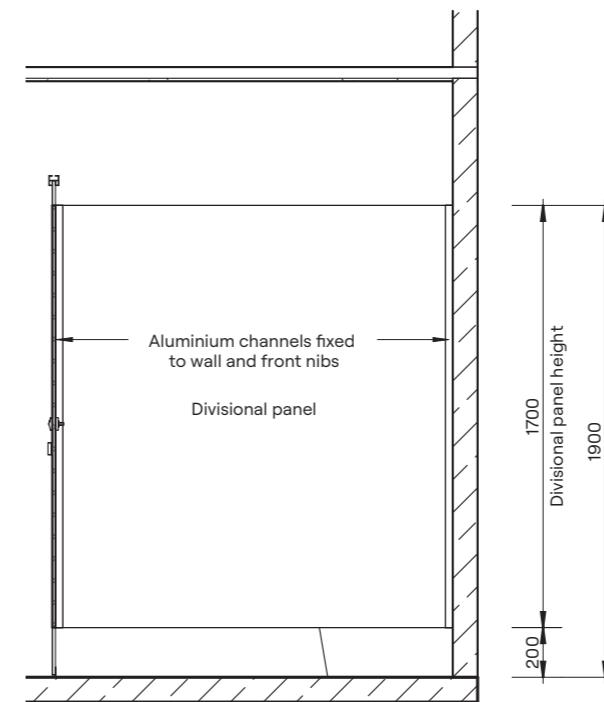
Floor Mounting Detail



Optional 150mm Skirt Mount Detail



Elevation



Section

**HOW TO SPECIFY**

**Product**  
DuraCube floor mount overhead braced (FOB)

**Door and Panel Construction Material**  
DuraSafe 13mm compact laminate

**Hardware**  
Viva satin chrome hardware is standard  
Other hardware is available – see pages 90-91

**Headrail**  
Aluminium square profile 40mm x 40mm  
Colour – Oyster Grey powder coat

**Floor Mounting**  
Nib panels fixed with 40mm x 12mm powder coated aluminium flat bar or optional skirt mount

**Overall System Height**  
2020mm AFFL



DuraSafe 5003 Phillipine Teak

Our floor mount ceiling fixed wet area partitioning system is designed specifically for use in upmarket corporate applications or anywhere that requires a quality finished bathroom.

The superbly finished, streamlined design makes this system one of our most popular and aesthetically pleasing partitioning systems.

#### REGULATORY COMPLIANCE

- NCC 2022 Part F — Deem to Satisfy Provisions
- F4D82c — Door removable from outside if less than 1.2m between pan and doorway.

#### APPLICATIONS

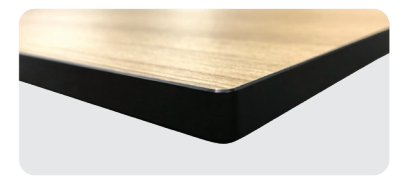
- Schools and universities
- End-of-trip facilities
- Shopping centres
- Sport and gym change rooms
- Defence ablution blocks
- Corporate amenities
- Recreational amenities
- Pubs and clubs

#### FEATURES & BENEFITS

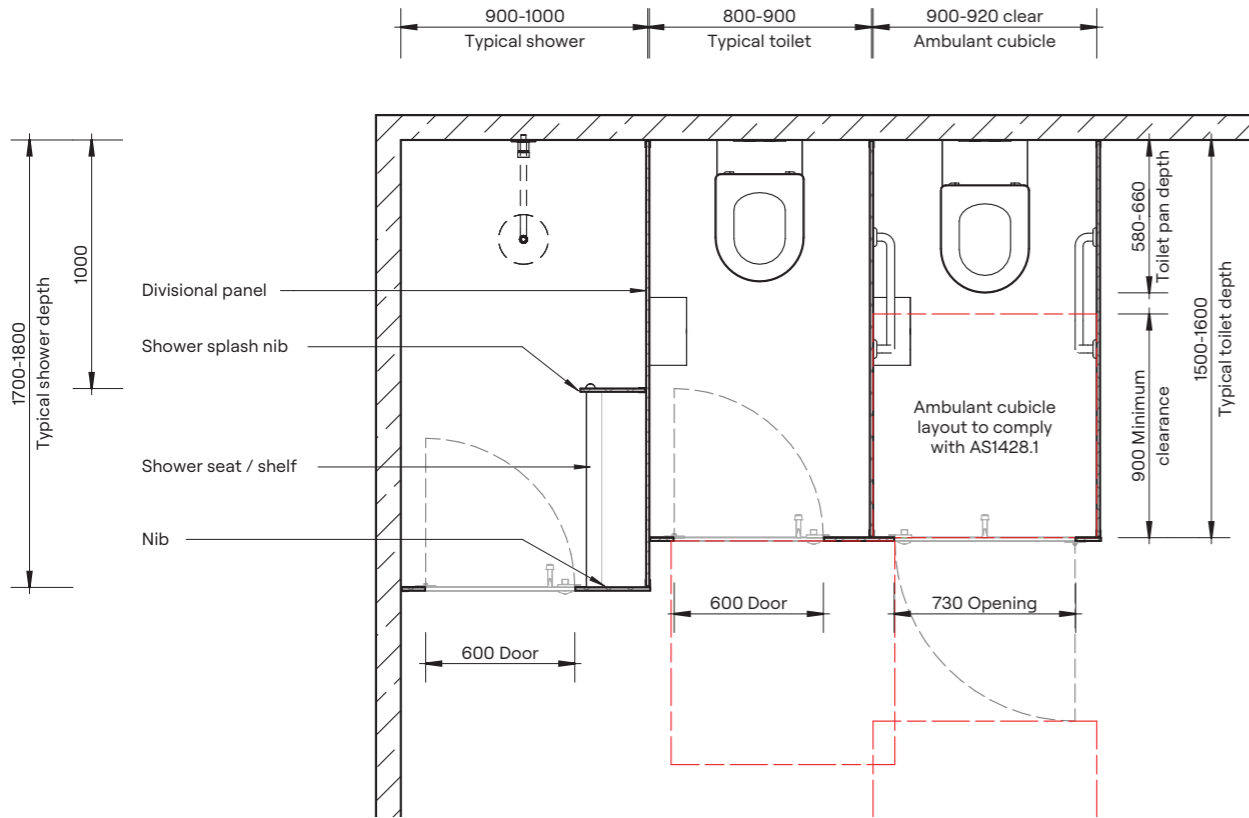
- Nibs mounted to the floor provide stability, strength and durability
- DuraSafe 13mm compact laminate construction
- No edge strip required as compact laminate black core is visible on the edges
- Aesthetically pleasing design with clean lines
- Impact-resistant construction
- Vandal-resistant surface
- Waterproof, suitable for hose cleaning
- Easy to clean and sanitise
- Reduced maintenance time and cost
- Overall system height 2020mm AFFL

**“The floor mount ceiling fixed partitioning system presents a quality, up-market aesthetic through clean lines and the continuity of the finish.”**

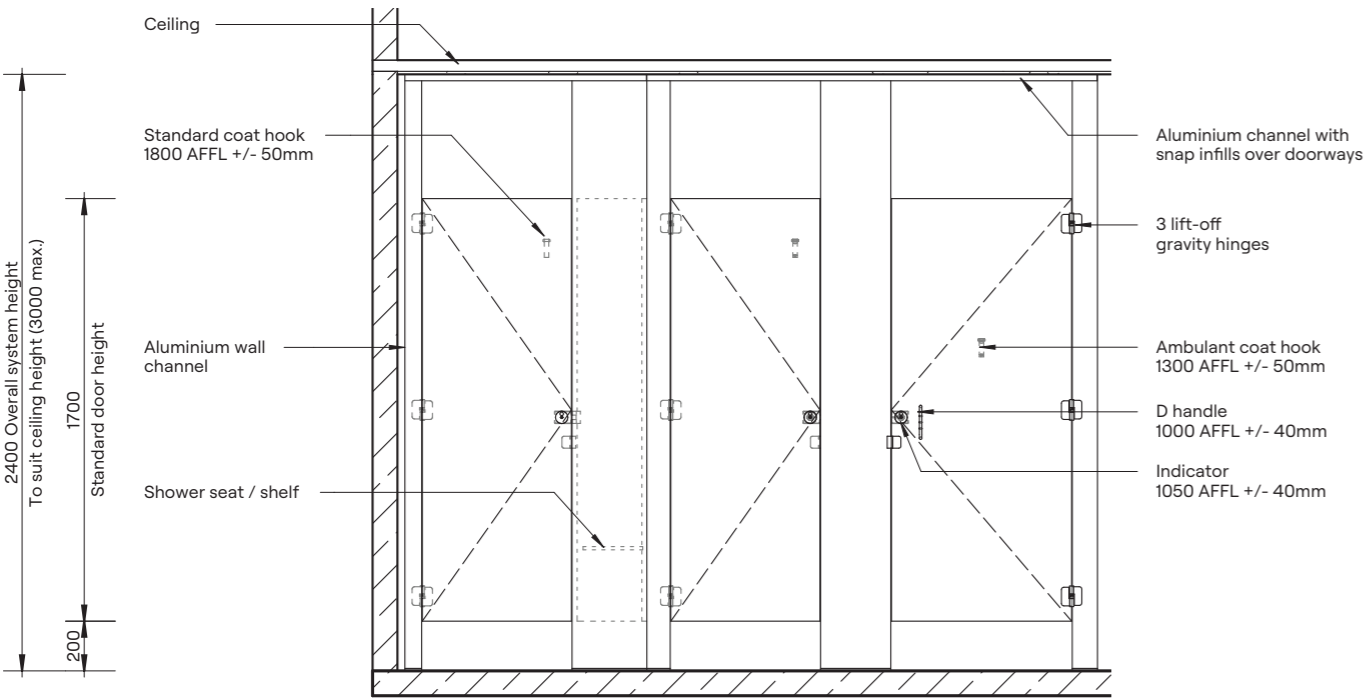
**Ron Simpson**  
Major Projects Manager, DuraCube



**DuraSafe Compact Laminate**  
All DuraCube panels and doors are constructed with DuraSafe 13mm compact laminate.

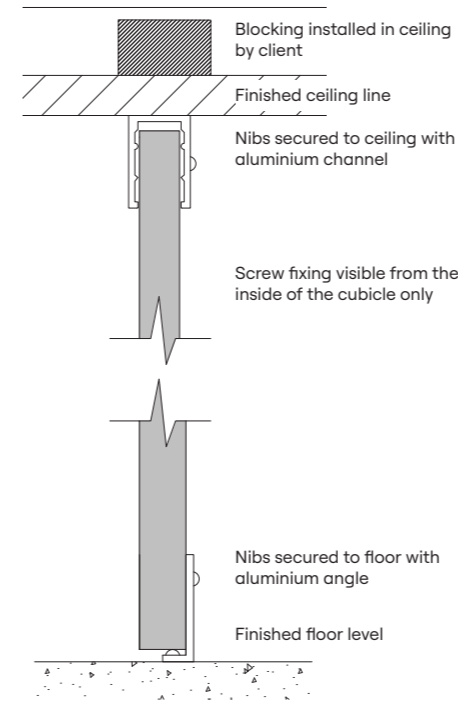


Plan

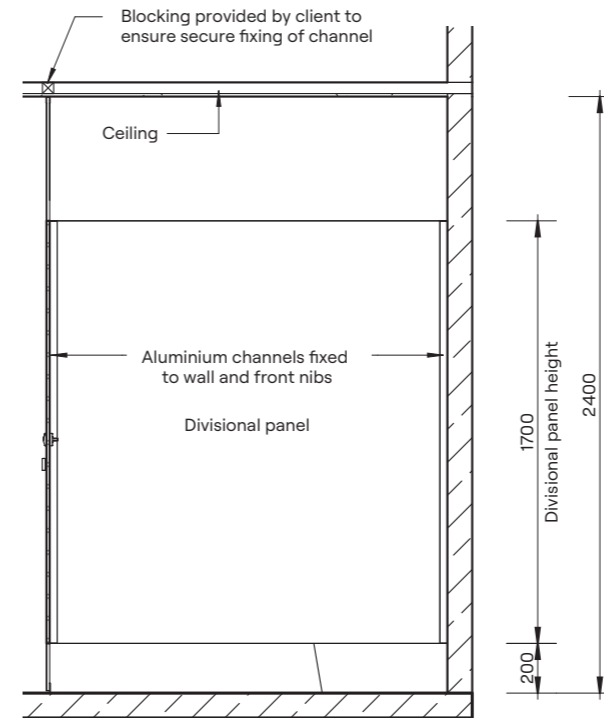


Elevation

Ceiling Fixing Detail



Floor Mounting Detail



Section

**HOW TO SPECIFY**

**Product**  
DuraCube floor mount ceiling fixed (FCF)

**Door and Panel Construction Material**  
DuraSafe 13mm compact laminate

**Hardware**  
Viva satin chrome hardware is standard  
Other hardware is available – see pages 90-91

**Ceiling Fixing**  
Aluminium C channel 20mm x 30mm fixed to the ceiling  
Colour – Oyster Grey powder coat

**Floor Mounting**  
Nib panels fixed with 40mm x 12mm powder coated aluminium flat bar

**Overall System Height**  
2400mm to 3000 AFFL



DuraSafe 5003 Phillipine Teak

Our floor mount free standing wet area partitioning system is one of the most sophisticated systems we offer.

This high quality, low maintenance solution is specifically designed for use in low traffic areas and is suitable for upmarket corporate applications.

#### REGULATORY COMPLIANCE

- NCC 2022 Part F — Deem to Satisfy Provisions
- F4D82c — Door removable from outside if less than 1.2m between pan and doorway.

#### APPLICATIONS

- Corporate amenities
- Low traffic areas

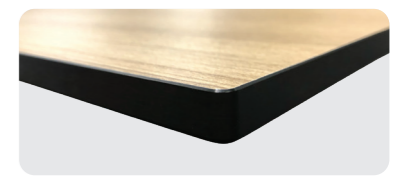
“The floor mount free standing partitioning system offers a sleek, minimalist design for use in low traffic areas.”

**Matthew Ponza**  
Specification Manager, DuraCube

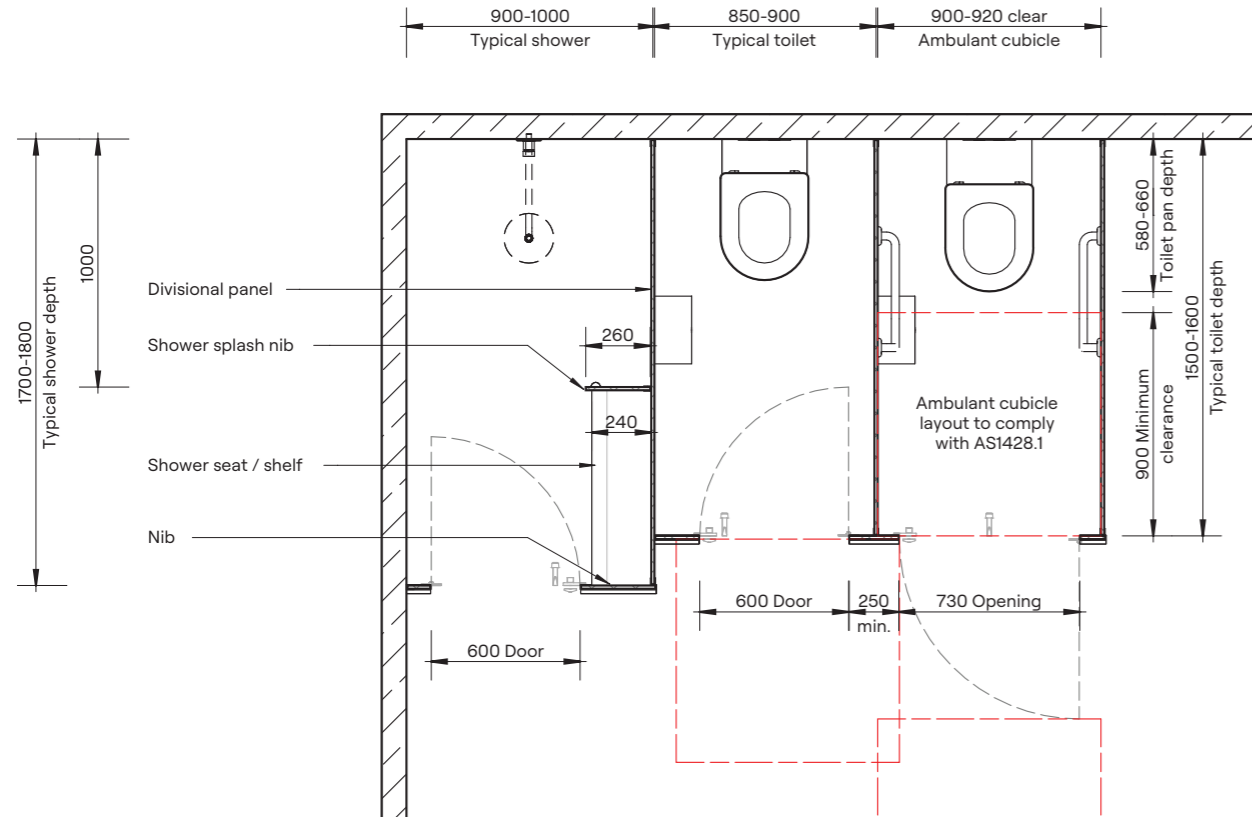
#### FEATURES & BENEFITS

- No headrail or ceiling fixing creates a sleek, modern design with clean lines
- Nibs mounted to the floor provide stability
- DuraSafe 13mm compact laminate construction
- No edge strip required as compact laminate black core is visible on the edges
- Impact-resistant construction
- Vandal-resistant surface
- Waterproof, suitable for hose cleaning
- Easy to clean and sanitise
- Reduced maintenance time and cost
- Overall system height 1900mm AFFL

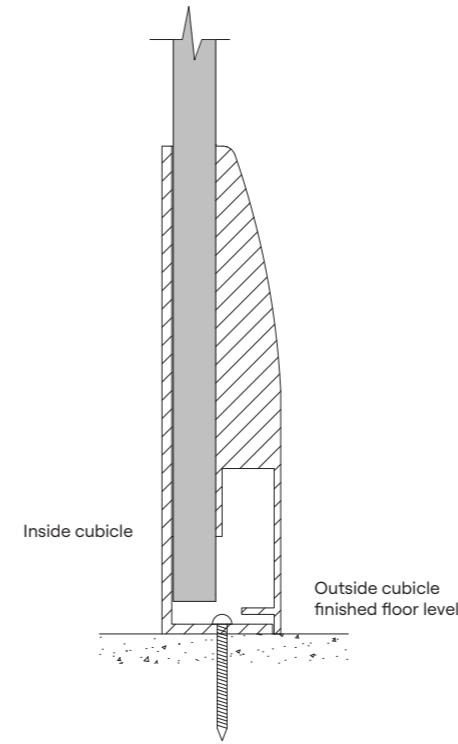
**Please Note:** This system is only suitable for installation on a concrete sub-floor. Minimum fixing depth is 100mm. Fixings will penetrate the waterproofing membrane.



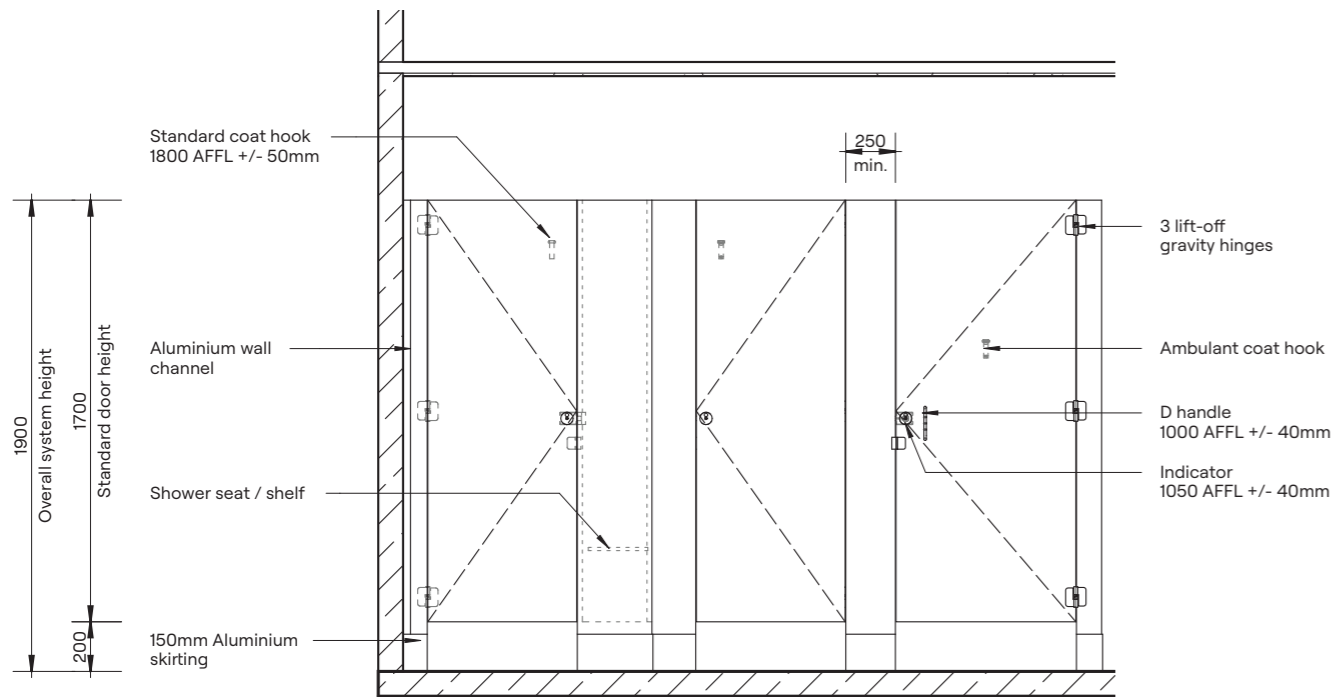
**DuraSafe Compact Laminate**  
All DuraCube panels and doors are constructed with DuraSafe 13mm compact laminate.



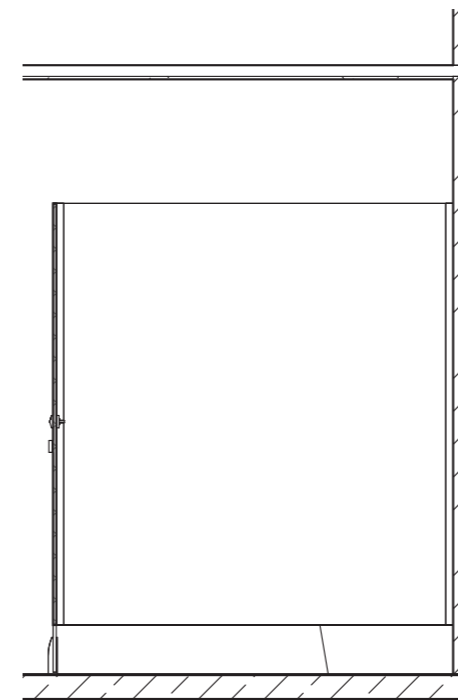
Plan



150mm Skirt Mount Detail



Elevation



Section

**HOW TO SPECIFY**

**Product**  
DuraCube floor mount free standing (FFS)

**Door and Panel Construction Material**  
DuraSafe 13mm compact laminate

**Hardware**  
Viva satin chrome hardware is standard  
Other hardware is available – see pages 90-91

**Floor Mounting**  
Nib panels fixed with skirt mount  
Colour – Oyster Grey powder coat

**Overall System Height**  
1900mm AFFL



DuraSafe 268 Evening, and DuraSafe 5003 Phillipine Teak

**Our full height privacy core is a wet area partitioning system that provides visual privacy at an affordable price.**

Privacy core panels above the doors are slotted to provide air circulation.

This system complies with Department of Education standards in most Australian states.

**REGULATORY COMPLIANCE**

- NCC 2022 Part F — Deem to Satisfy Provisions
- F4D81a — Unisex facility requirement for full height doors and partitions
- F4D82c — Door removable from outside if less than 1.2m between pan and doorway

**APPLICATIONS**

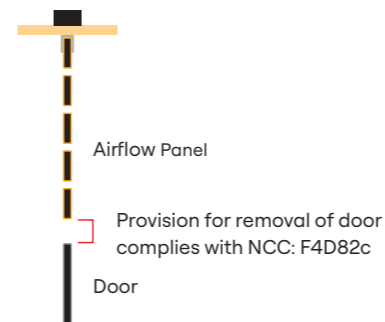
- Schools and universities
- End-of-trip facilities
- Shopping centres
- Sport and gym change rooms
- Defence ablution blocks
- Corporate amenities
- Recreational amenities

**FEATURES & BENEFITS**

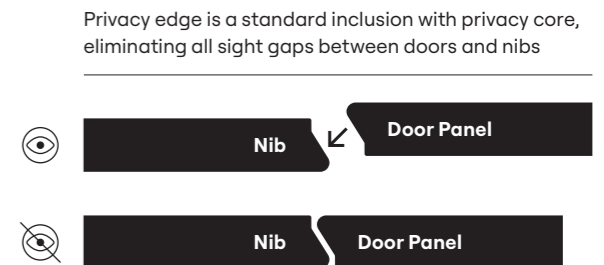
- Cost-effective privacy partitioning system
- Nibs and divisional panels are mounted to the floor and fixed to the ceiling to maximise privacy
- DuraCube privacy edge is a standard inclusion
- Slotted panel above door enables ventilation
- DuraSafe 13mm compact laminate construction
- No edge strip required as compact laminate black core is visible on the edges
- Impact-resistant construction
- Vandal-resistant surface
- Waterproof, suitable for hose cleaning
- Easy to clean and sanitise
- Reduced maintenance time and cost
- Overall system height 2340mm to 3000mm AFFL

**“The full height privacy core partitioning system provides visual privacy and ventilation at an economical price.”**

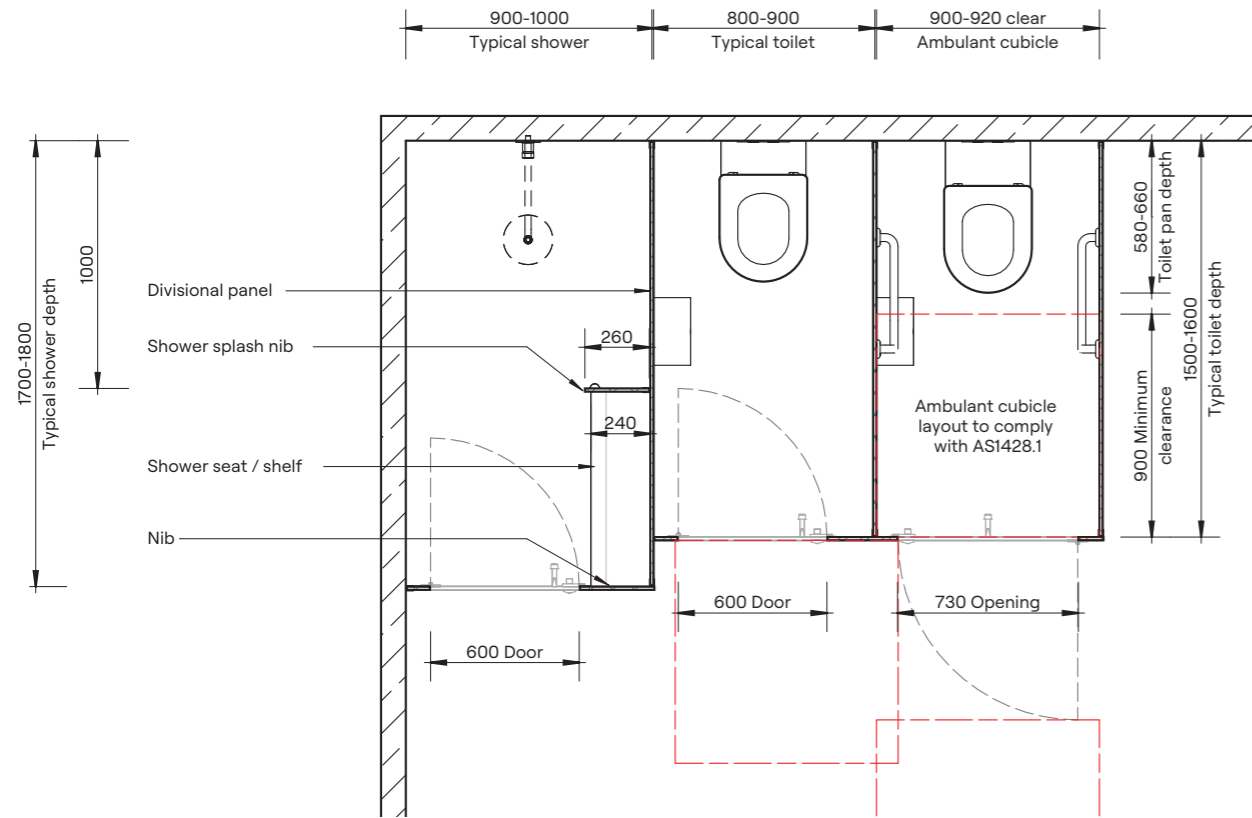
Harry Simpson  
Sales Manager, DuraCube



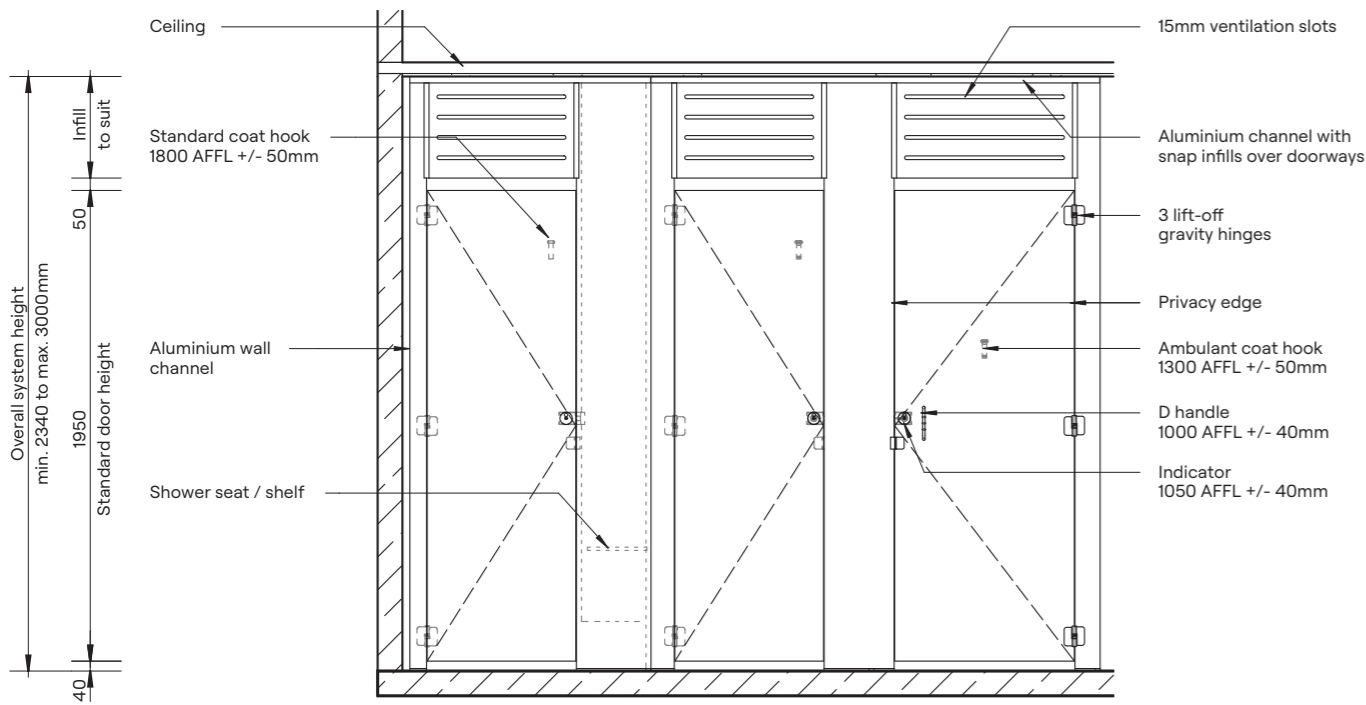
**Slotted Panel Detail**



Privacy edge is a standard inclusion with privacy core, eliminating all sight gaps between doors and nibs

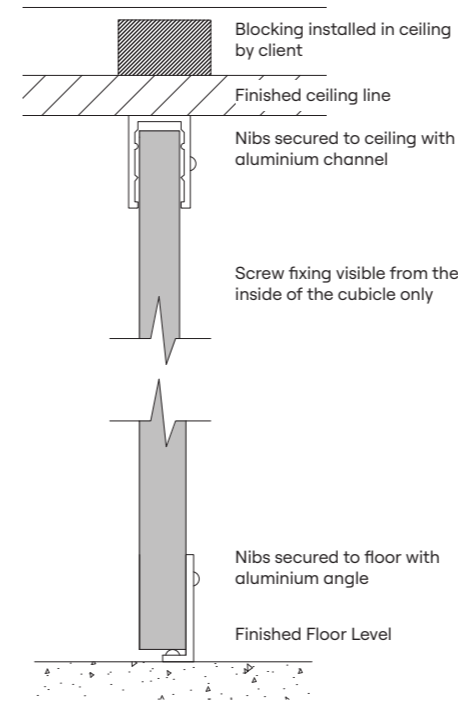


Plan

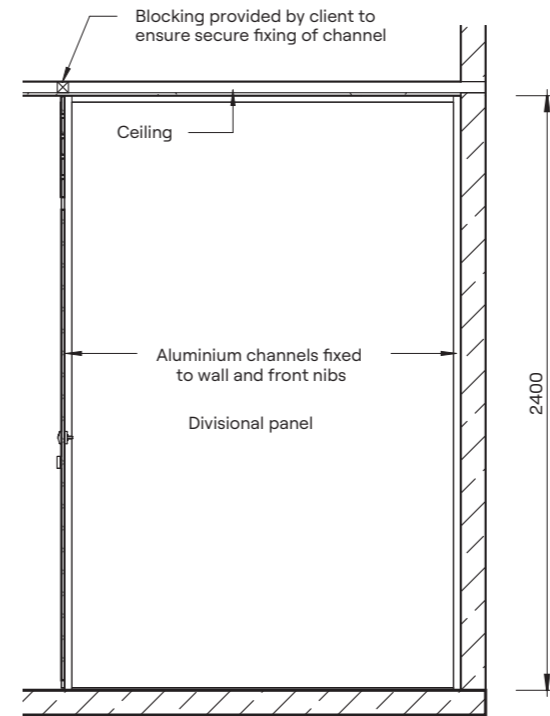


Elevation

Ceiling Fixing Detail



Floor Mounting Detail



Section

**HOW TO SPECIFY**

**Product**  
DuraCube full height privacy core (FHPC)

**Door and Panel Construction Material**  
DuraSafe 13mm compact laminate

**Construction**  
Privacy edge angled door and nibs  
Privacy core ventilation panel

**Hardware**  
Viva satin chrome hardware is standard  
Other hardware is available – see pages 90-91

**Ceiling Fixing**  
Aluminium channel  
Colour – Oyster Grey powder coat

**Floor Mounting**  
Aluminium angle  
Colour – Oyster Grey powder coat

**Overall System Height**  
Min. 2340mm to Max. 3000mm AFFL



DuraSafe 111 Arctic White

Our full height privacy ultra is a wet area partitioning system is designed for high use areas where privacy is of the highest concern, such as schools, swimming pools and sporting facilities.

Floor-to-ceiling doors, panels and nibs create a streamlined design with minimal gaps providing a low maintenance and ultra private solution.

#### REGULATORY COMPLIANCE

- NCC 2022 Part F — Deem to Satisfy Provisions
- F4D81a — Unisex facility requirement for full height doors and partitions.
- F4D82c — Door removable from outside if less than 1.2m between pan and doorway.

#### APPLICATIONS

- Schools and universities
- End-of-trip facilities
- Shopping centres
- Sport and gym change rooms
- Defence ablution blocks
- Corporate amenities
- Recreational amenities

#### FEATURES & BENEFITS

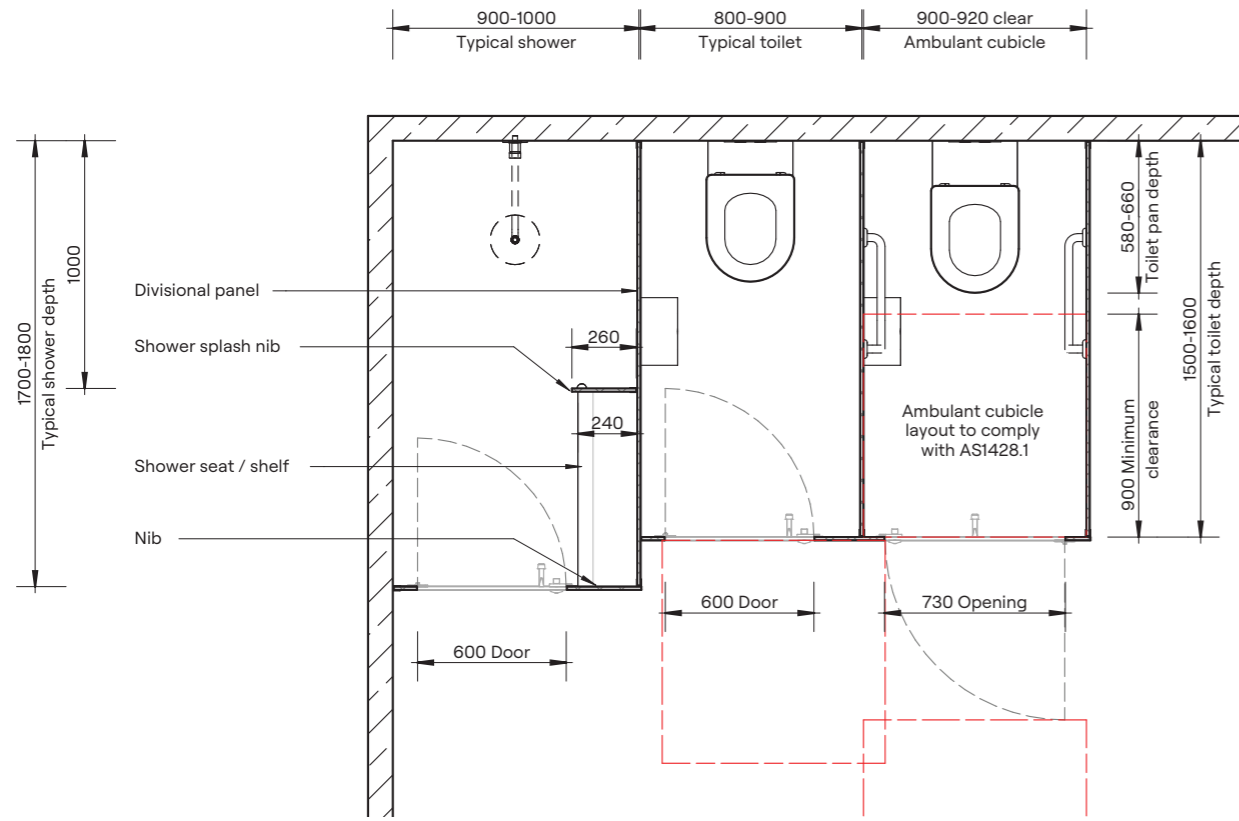
- Modern, minimalist design with clean lines
- Nibs and divisional panels are mounted to the floor and fixed to the ceiling to maximise privacy
- DuraCube privacy edge is a standard inclusion
- No sight gaps around panels, nibs and doors
- DuraSafe 13mm compact laminate construction
- No edge strip required as compact laminate black core is visible on the edges
- Impact-resistant construction
- Vandal-resistant surface
- Waterproof, suitable for hose cleaning
- Easy to clean and sanitise
- Reduced maintenance time and cost
- Overall system height 2100 to 3000mm AFFL

**“The full height privacy ultra partitioning system provides visual privacy in an elegant, sleek design.”**

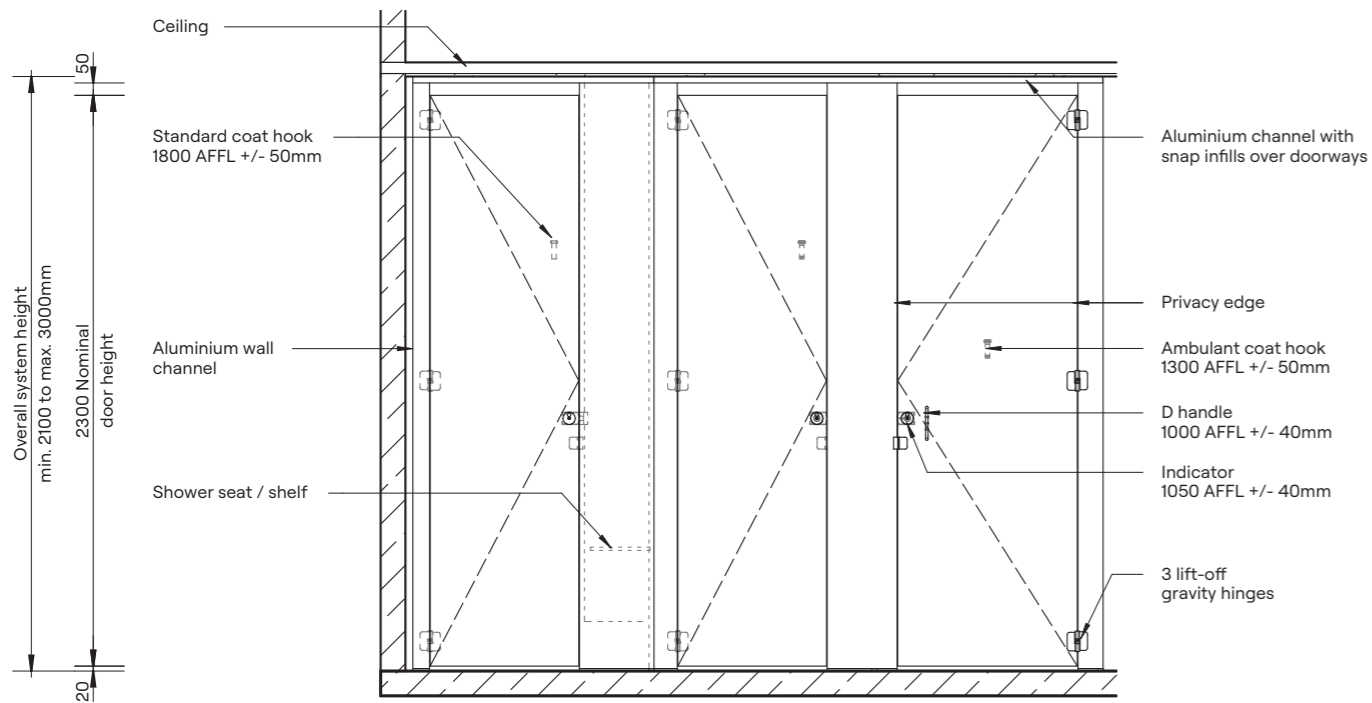
Nick Serafin  
Marketing Manager, DuraCube



Privacy edge is a standard inclusion with privacy ultra, eliminating all sight gaps between doors and nibs

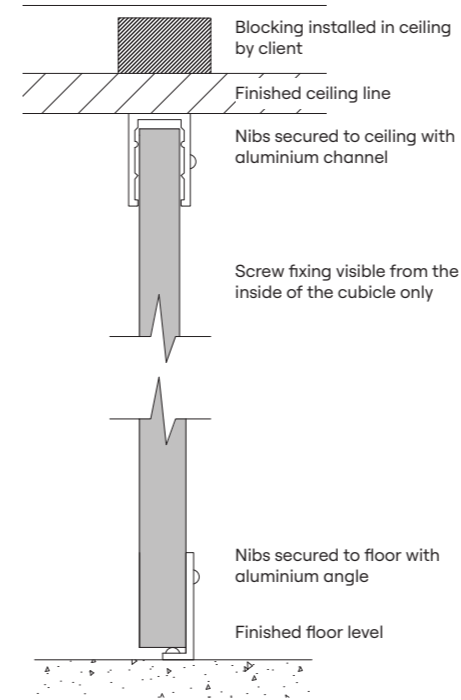


Plan

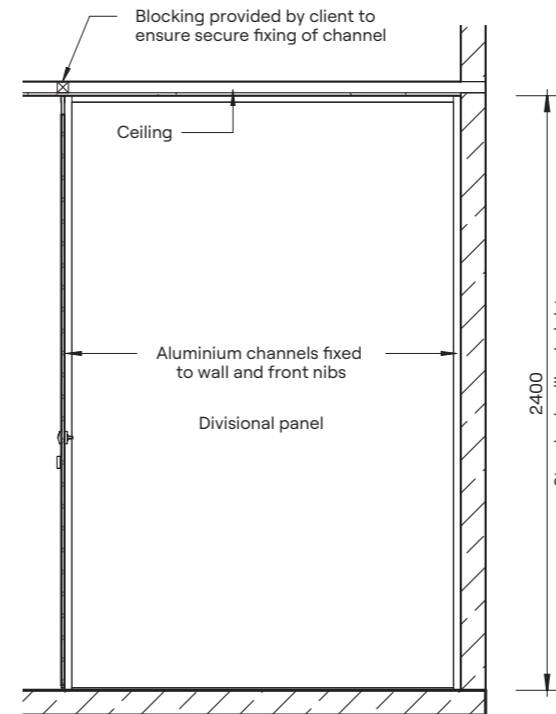


Elevation

Ceiling Fixing Detail



Floor Mounting Detail



Section

**HOW TO SPECIFY**

**Product**  
DuraCube full height privacy ultra (FHPU)

**Door and Panel Construction Material**  
DuraSafe 13mm compact laminate

**Construction**  
Privacy edge angled door and nib

**Hardware**  
Viva satin chrome hardware is standard  
Other hardware is available – see pages 90-91

**Ceiling Fixing**  
Aluminium channel  
Colour – Oyster Grey powder coat

**Floor Mounting**  
Aluminium angle  
Colour – Oyster Grey powder coat

**Overall System Height**  
Min. 2100mm to Max. 3000mm AFFL



DuraSafe 5003 Phillipine Teak, and DuraSafe 297 Deep Water

The full height privacy max is a wet area partitioning system that provides a cost-effective alternative to traditional stud wall construction.

Privacy Max cubicles ensure maximum visual and acoustic privacy while also allowing ventilation.

**REGULATORY COMPLIANCE**

- NCC 2022 Part F — Deem to Satisfy Provisions
- F4D81a — Unisex facility requirement for full height doors and partitions.
- F4D82c — Door removable from outside if less than 1.2m between pan and doorway.
- Ventilation Grill has maximum pressure drop of 12Pa at 25l/s of forced exhaust air ventilation to provide makeup air to comply with NCC 2022 J6D5. (Full report available).

**APPLICATIONS**

- Schools and universities
- End-of-trip facilities
- Shopping centres
- Sport and gym change rooms
- Defence ablution blocks
- Corporate amenities
- Recreational amenities

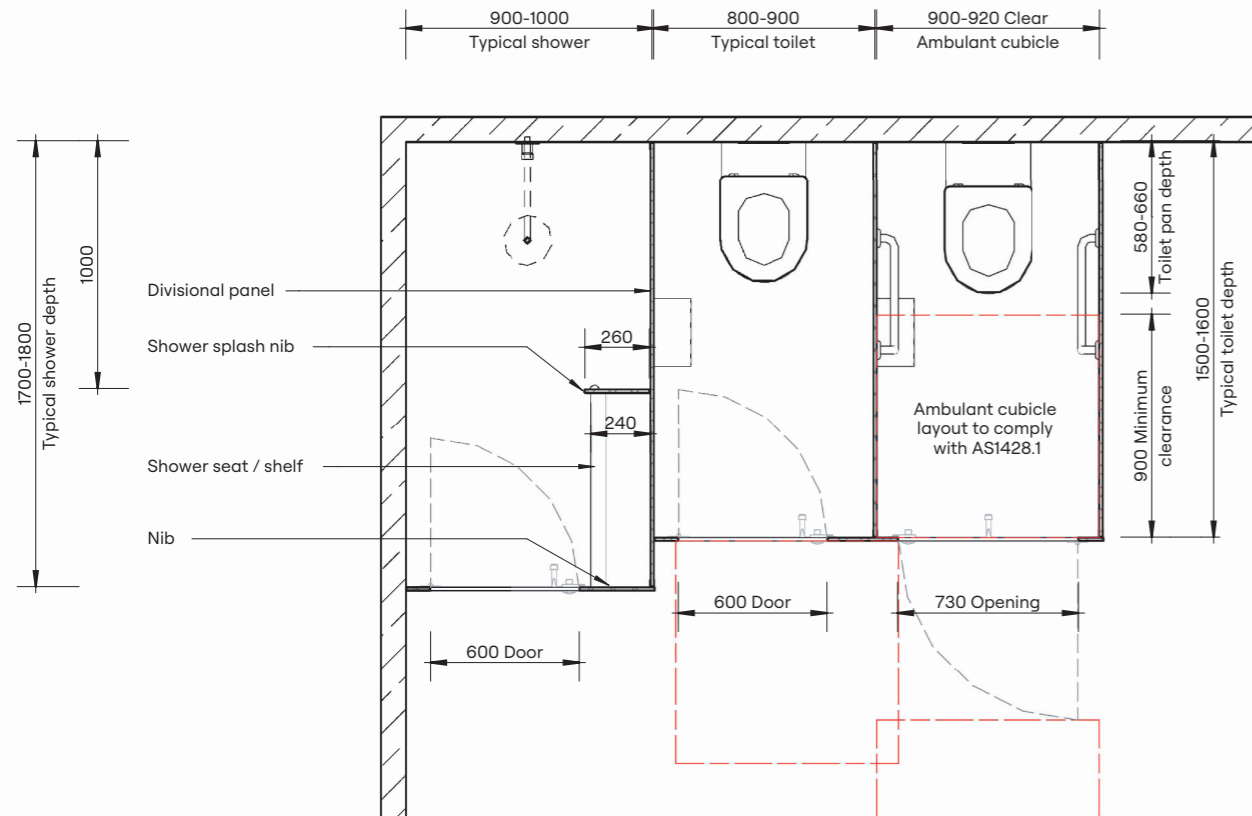
**FEATURES & BENEFITS**

- Efficient alternative to stud wall construction
- Nibs and divisional panels are mounted to the floor and fixed to the ceiling to maximise privacy
- Acoustic rubber seal around doors and openings
- No sight gaps around panels, nibs and doors
- DuraSafe 13mm compact laminate construction
- No edge strip required as compact laminate black core is visible on the edges
- Impact-resistant construction
- Vandal-resistant surface
- Waterproof, suitable for hose cleaning
- Easy to clean and sanitise
- Reduced maintenance time and cost
- Overall system height 2340 to 3000mm AFFL
- Suitable for mechanically ventilated areas only

**“The full height privacy max partitioning system eliminates all gaps around panels and doors to increase comfort for its users.”**

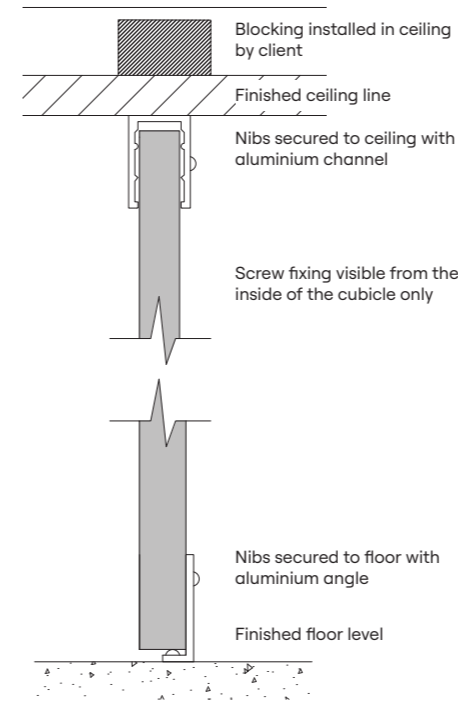
**Alana Jackson**  
Specification Manager, DuraCube



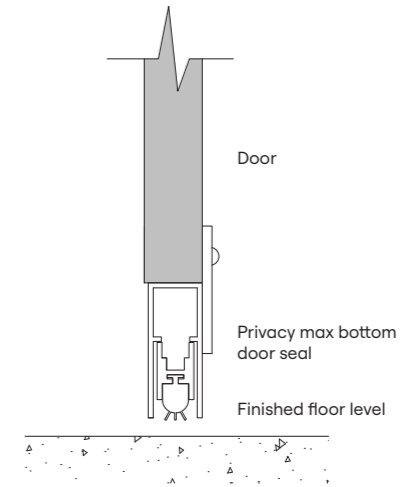


Plan

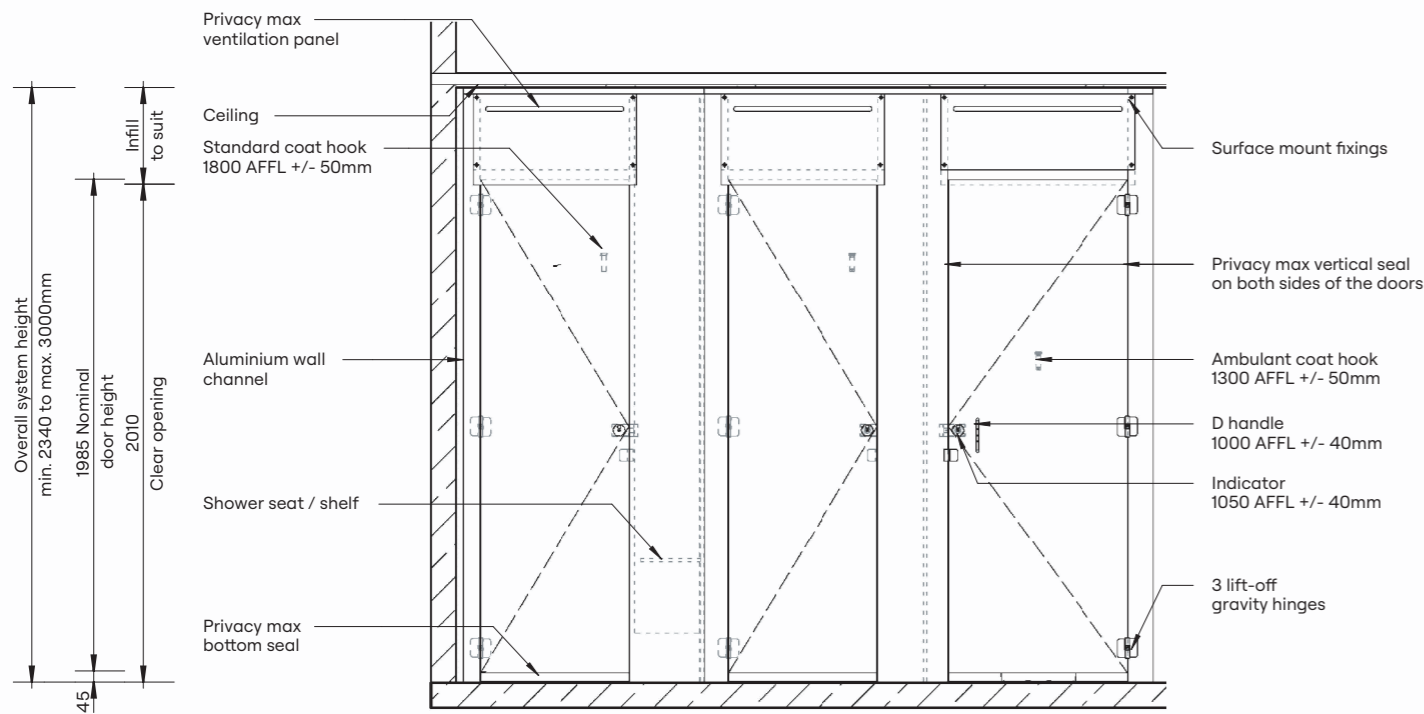
Ceiling Fixing Detail



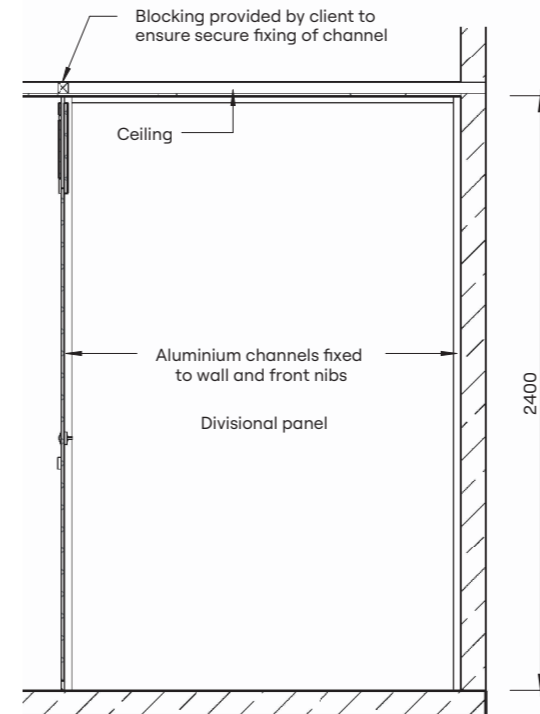
Floor Mounting Detail



Door Seal Detail



Elevation



Section

**HOW TO SPECIFY**

**Product**  
DuraCube full height privacy max (FHPM)

**Door and Panel Construction Material**  
DuraSafe 13mm compact laminate

**Construction**  
Privacy max door seals  
Privacy max ventilation panel

**Hardware**  
Viva satin chrome hardware is standard  
Other hardware is available – see pages 90-91

**Ceiling Fixing**  
Aluminium channel  
Colour – Oyster Grey powder coat

**Floor Mounting**  
Aluminium angle  
Colour – Oyster Grey powder coat

**Overall System Height**  
Min. 2340mm to Max. 3000mm AFFL

# SECTION 2

# PRIVACY PANELS

Overview	44
Privacy Panel – Wall Mount (PWM)	45-47
Privacy Panel – Pedestal Mount (PPM)	45-47
Privacy Panel – Childcare (PCC)	45-47
Privacy Panel – Full Height (PFH)	45-47
Privacy Panel – Post Fixed (PPF)	45-47





**DuraCube privacy panels are a versatile wet area screening solution providing privacy in open plan bathrooms and change rooms.**

Privacy panels are usually installed between urinals or as a substitute for an airlock.

Childcare privacy panels separate toilets at early learning centres and preschools.

Our range includes wall mount, pedestal mount, childcare, full height and post fixed.

#### APPLICATIONS

- Schools and universities
- End-of-trip facilities
- Shopping centres
- Sport and gym change rooms
- Defence ablution blocks
- Corporate amenities
- Recreational amenities

#### FEATURES & BENEFITS

- Privacy panels are easy to install
- Unobtrusive design
- Compact laminate colours will coordinate with partitioning system colour scheme
- Compact laminate is vandal and Impact-resistant construction material
- Waterproof, suitable for hose cleaning
- Easy to clean and sanitise, reducing maintenance time and cost
- Oyster Grey powder coat aluminium extrusions with stainless steel fixings

**“The DuraCube privacy panels range is quick and easy to install, quick and easy to clean, and allows consistency right throughout a project’s bathroom joinery systems.”**

**Ben Simpson**  
General Manager, DuraCube



Privacy Panel – Wall Mount (PWM)



Privacy Panel – Pedestal Mount (PPM)



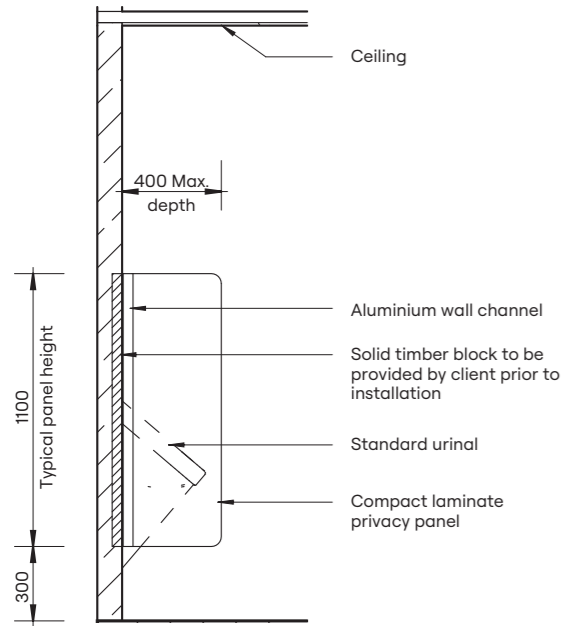
Privacy Panel – Childcare (PCC)



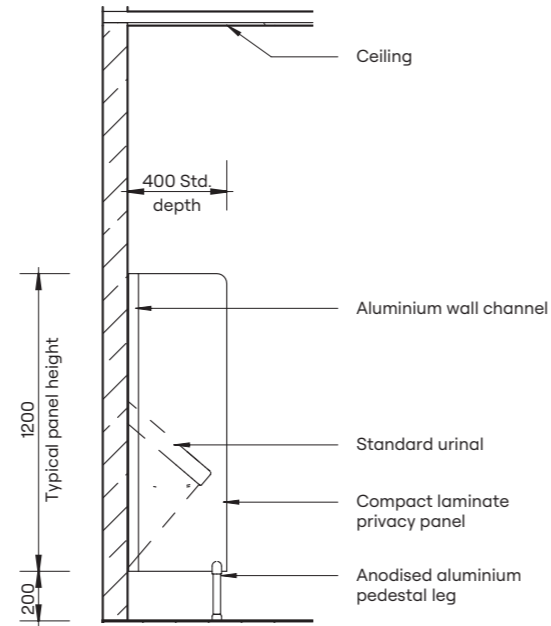
Privacy Panel – Full Height (PFH)



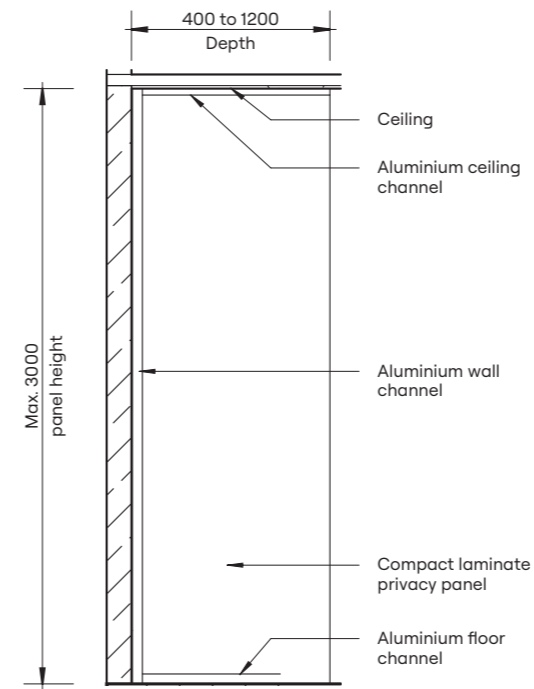
Privacy Panel – Post Fixed (PPF)



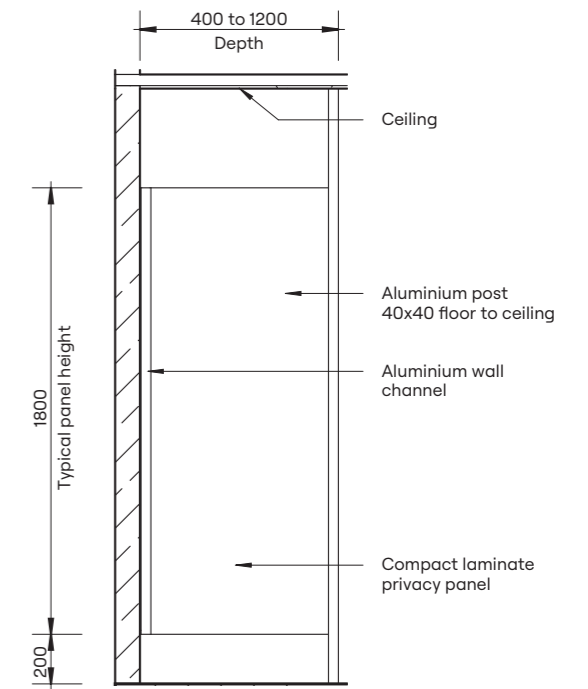
Privacy Panel – Wall Mount (PWM)



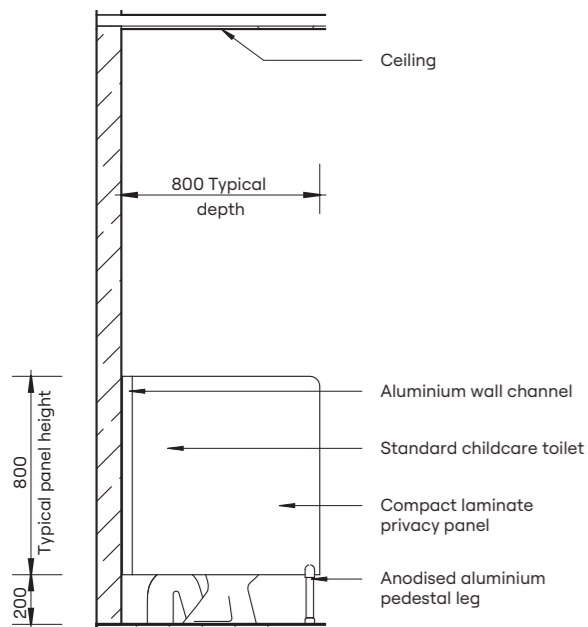
Privacy Panel – Pedestal Mount (PPM)



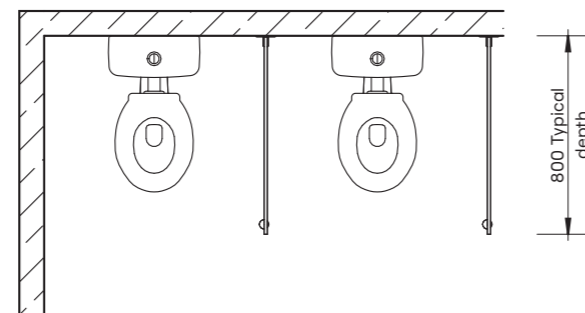
Privacy Panel – Full Height (PFH)



Privacy Panel – Post Fixed (PPF)



Privacy Panel – Childcare (PCC)



HOW TO SPECIFY				
Product Name	Materials	Typical Height	Typical Width	Floor Mount/Ceiling Fixed
Privacy Panel – Wall Mount (PWM)	DuraSafe 13mm Compact Laminate	1400mm AFFL	400mm	Wall mount only with aluminium T-channel
Privacy Panel – Pedestal Mount (PPM)		1400mm AFFL	400mm	Floor mount with adjustable 200mm aluminium pedestal legs
Privacy Panel – Childcare (PCC)		1000mm AFFL	800mm	Floor mount with adjustable 200mm aluminium pedestal legs
Privacy Panel – Full Height (PFH)		To Ceiling Max. 3000mm	400mm to 1200mm	Floor mount with aluminium angle Ceiling fixed with aluminium channel
Privacy Panel – Post Fixed (PPF)		2000mm AFFL	400mm to 1200mm	40 × 40mm floor-to-ceiling square post

**Please Note:** Custom sizes and solutions are available upon request. Contact our sales team for assistance.

# SECTION 3

# LOCKER SYSTEMS

Overview	50
Lockers – Plinth Mounted (LPM)	51
Lockers – Wall Mounted (LWM)	52
Lockers – Bench Mounted (LBM)	53
Lockers – Shoe Box Mounted (LSBM)	54
Lockers – Shoe Box Seating Mounted (LSBSM)	55
Lockers – Plinth Mounted End-of-Trip (LPM-EOT)	56
Lockers – Wall Mounted End-of-Trip (LWM-EOT)	58
Lockers – Shoe Box Mounted End-of-Trip (LSBM - EOT)	60
Lockers – Accessible Ironing Station (AIS)	62





DuraSafe 5333 Southern Pine,  
and DuraSafe 111 Arctic White

**DuraCube lockers are constructed from DuraSafe 13mm compact laminate, making them suitable for wet and dry locations.**

Compact laminate is vandal, impact, and water-resistant with a low maintenance surface.

Coordinate your locker colours with partitioning systems, bench seating and vanities.

**APPLICATIONS**

- Schools and universities
- End-of-trip facilities
- Sport and gym change rooms
- Defence ablution blocks

**“The DuraCube locker range has expanded to accommodate evolving trends, making it fast and easy to design and construct with bathroom joinery systems.”**

**Nick Serafin**  
Marketing Manager, DuraCube

**FEATURES & BENEFITS**

- DuraSafe 13mm compact laminate construction requires no edge strip due to black core edge
- Locker carcass constructed from either:
  - water-resistant white 16mm HMR board or
  - 100% waterproof white 16mm PVC board
- Black PVC edge tape on carcass to match black core on compact laminate panels and doors
- Four door colours can be used to create a pattern
- Shelving and vent options are available
- Coat rail is a standard inclusion
- One to four doors are optional per locker tower

**LOCK OPTIONS**

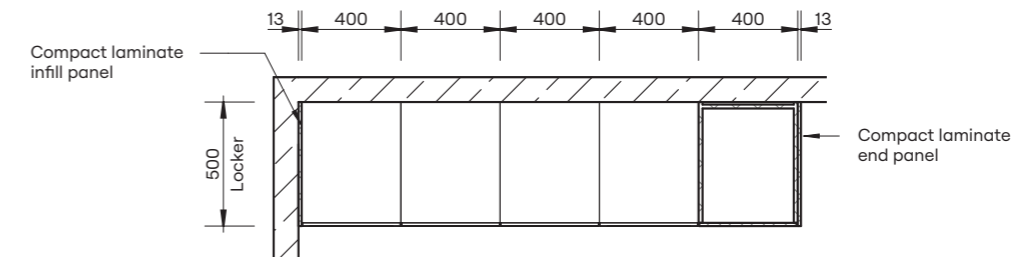
Electronic Touch Pad Lock (ETP)	Standard Key Lock (KL)	Electronic Button Lock (KL1000)	Mechanical Combination Lock (KL20)
			Padlock Hasp (PH)

**Lockers – Plinth Mounted (LPM)**

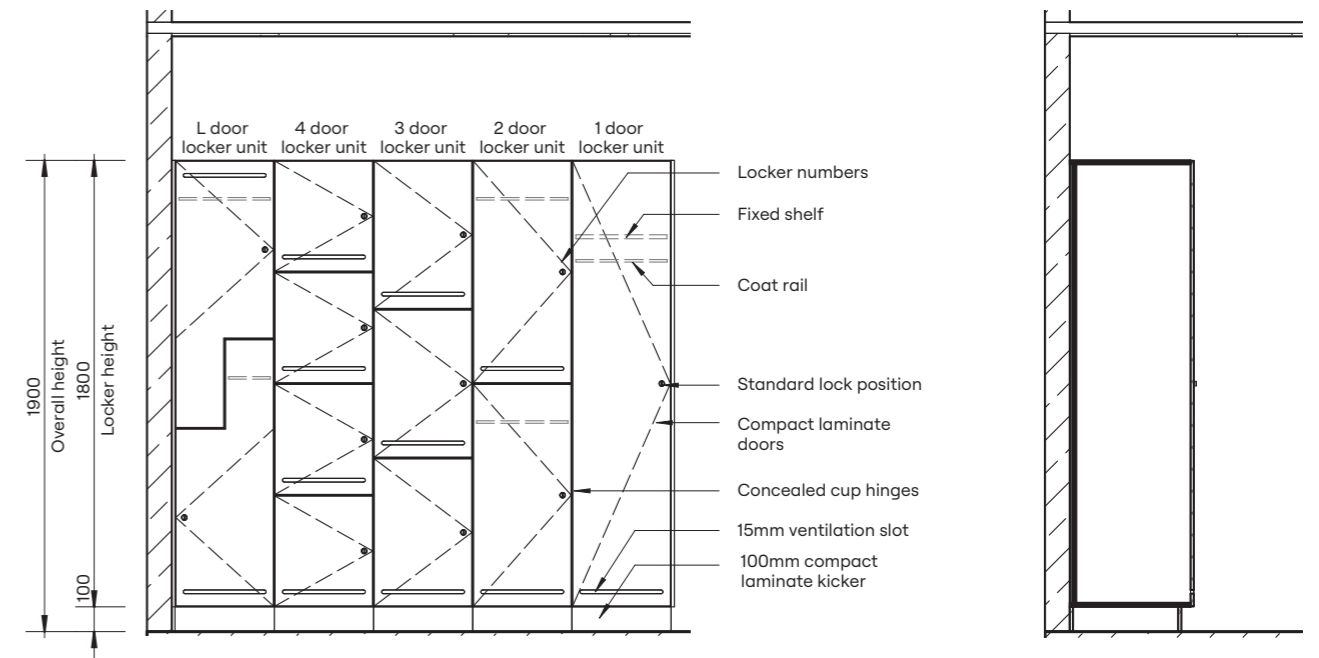


**HOW TO SPECIFY**

- Product**  
DuraCube locker systems – plinth mounted (LPM)
- Door and Panel Construction Material**  
DuraSafe 13mm compact laminate
- Internal Carcass Construction Material**  
Select either:  
Dry area lockers – white or black 16mm HMR board  
Wet area lockers – white 16mm PVC board
- Lock**  
Insert lock option here – see page 50



**Plan**



**Elevation**

**Section**



### Lockers – Wall Mounted (LWM)



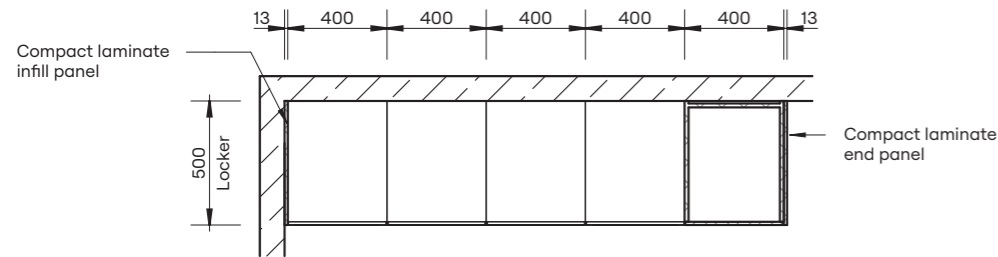
**HOW TO SPECIFY**

**Product**  
DuraCube locker systems – wall mounted (LWM)

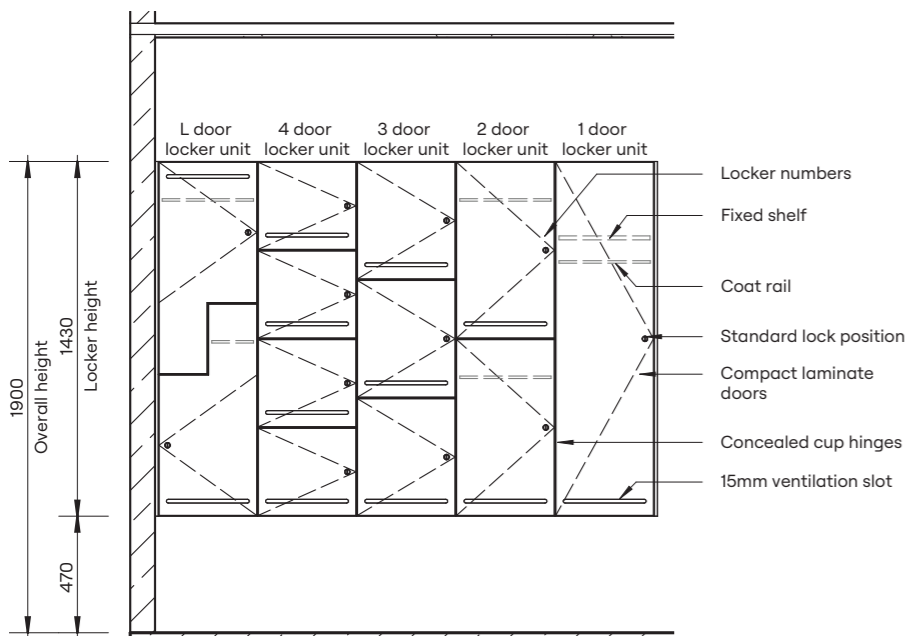
**Door and Panel Construction Material**  
DuraSafe 13mm compact laminate

**Internal Carcass Construction Material**  
Select either:  
Dry area lockers – white or black 16mm HMR board  
Wet area lockers – white 16mm PVC board

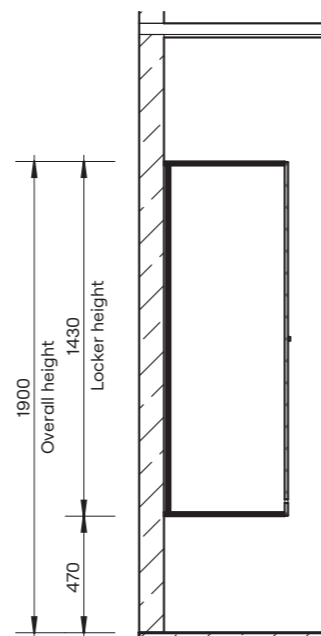
**Lock**  
Select lock option here – see page 50



Plan



Elevation



Section

### Lockers – Bench Mounted (LBM)



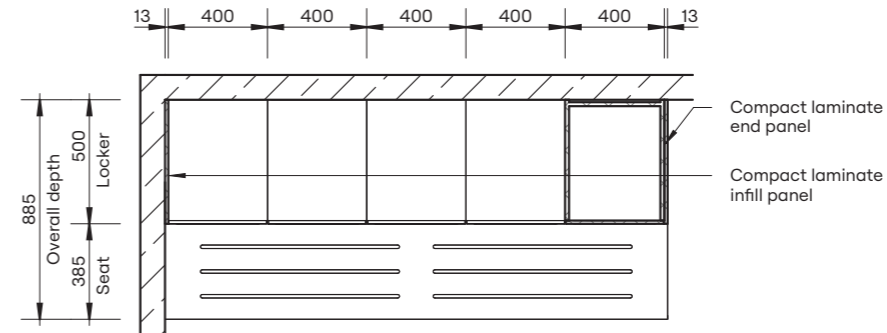
**HOW TO SPECIFY**

**Product**  
DuraCube locker systems – bench mounted (LBM)

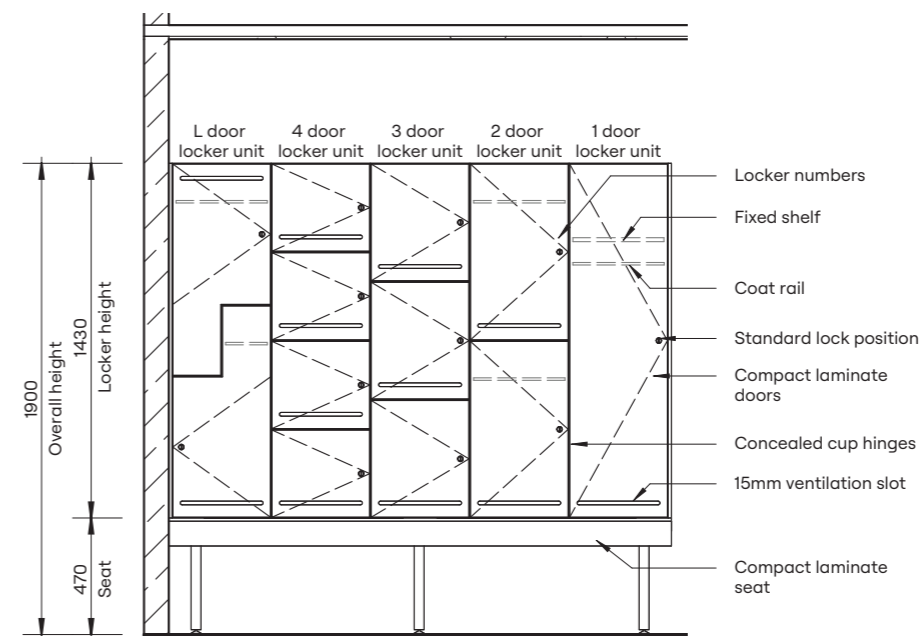
**Door and Panel Construction Material**  
DuraSafe 13mm compact laminate

**Internal Carcass Construction Material**  
Select either:  
Dry area lockers – white or black 16mm HMR board  
Wet area lockers – white 16mm PVC board

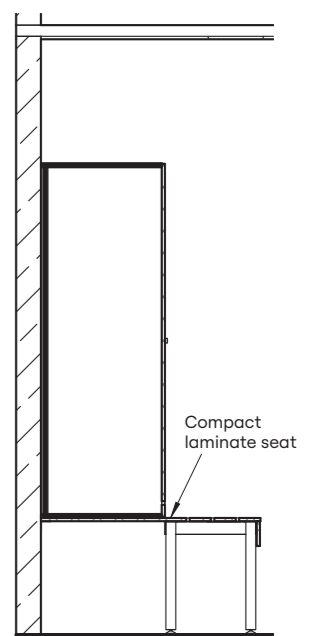
**Lock**  
Select lock option here – see page 50



Plan



Elevation



Section



### Lockers – Shoe Box Mounted (LSBM)



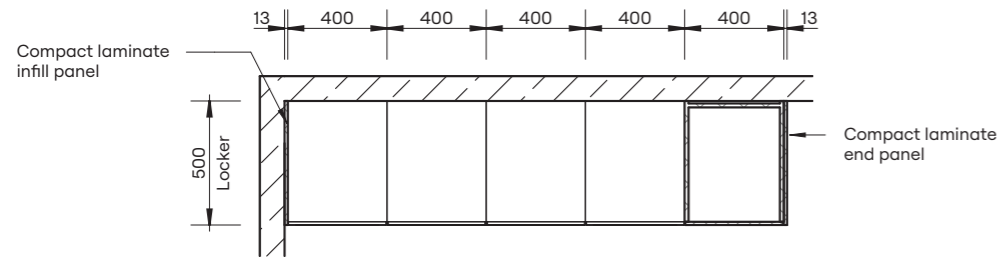
**HOW TO SPECIFY**

**Product**  
DuraCube locker systems – shoe box mounted (LSBM)

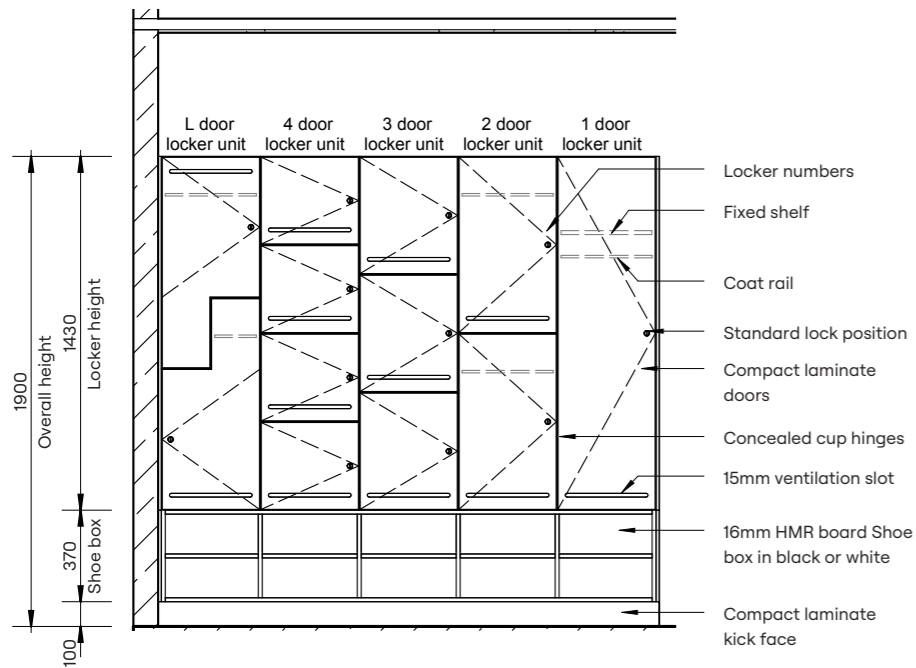
**Door and Panel Construction Material**  
DuraSafe 13mm compact laminate

**Internal Carcass Construction Material**  
Select either:  
Dry area lockers – white or black 16mm HMR board  
Wet area lockers – white 16mm PVC board

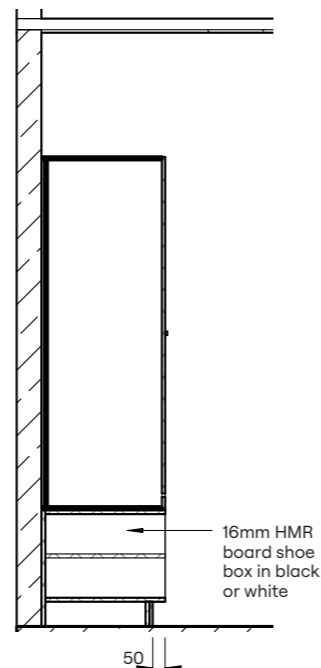
**Lock**  
Select lock option here – see page 50



Plan



Elevation



Section

### Lockers – Shoe Box Seating Mounted (LSBSM)



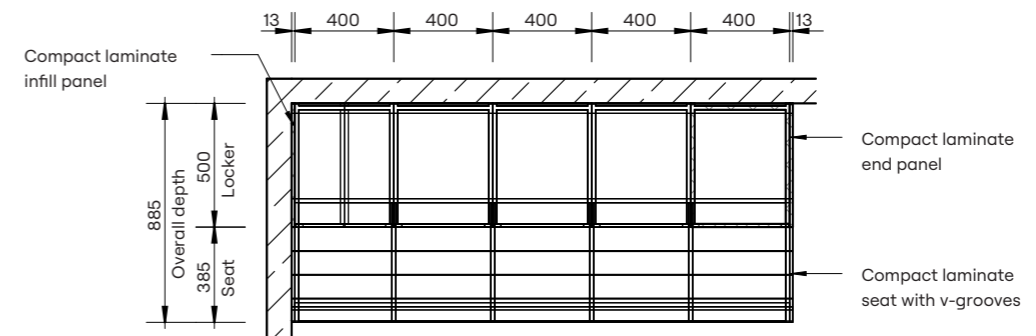
**HOW TO SPECIFY**

**Product**  
DuraCube locker systems – shoe box seating mounted (LSBSM)

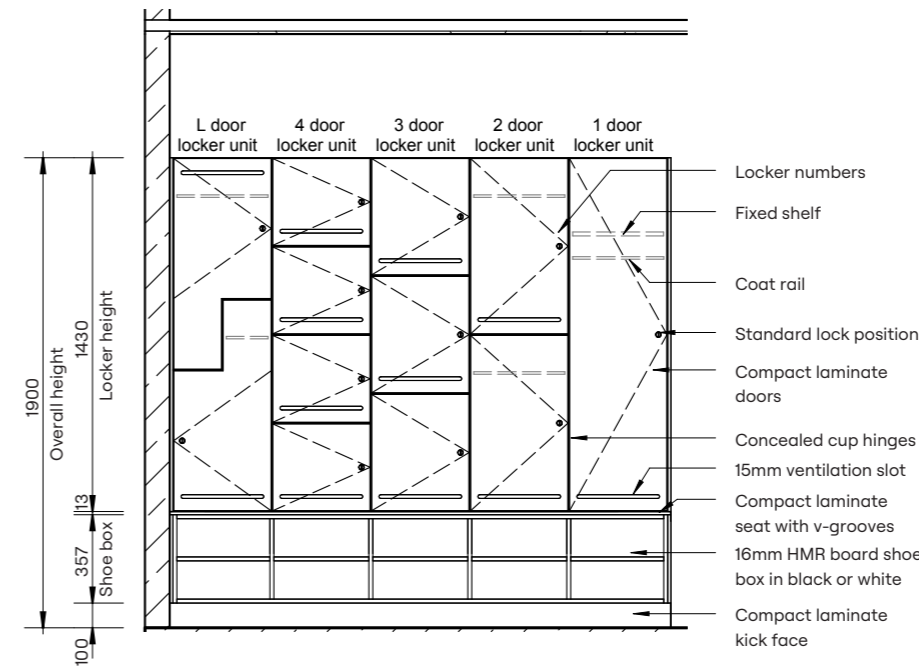
**Door and Panel Construction Material**  
DuraSafe 13mm compact laminate

**Internal Carcass Construction Material**  
Select either:  
Dry area lockers – white or black 16mm HMR board  
Wet area lockers – white 16mm PVC board

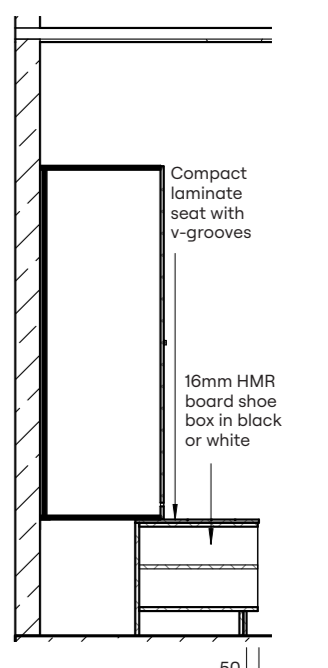
**Lock**  
Select lock option here – see page 50



Plan



Elevation



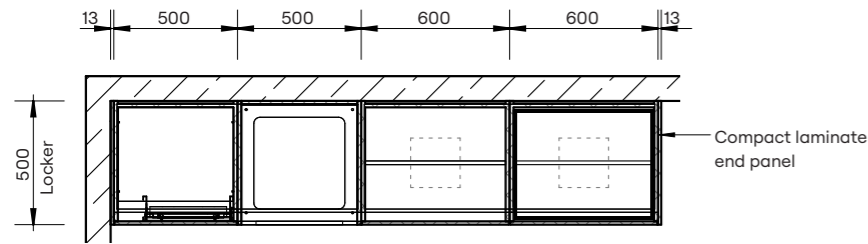
Section



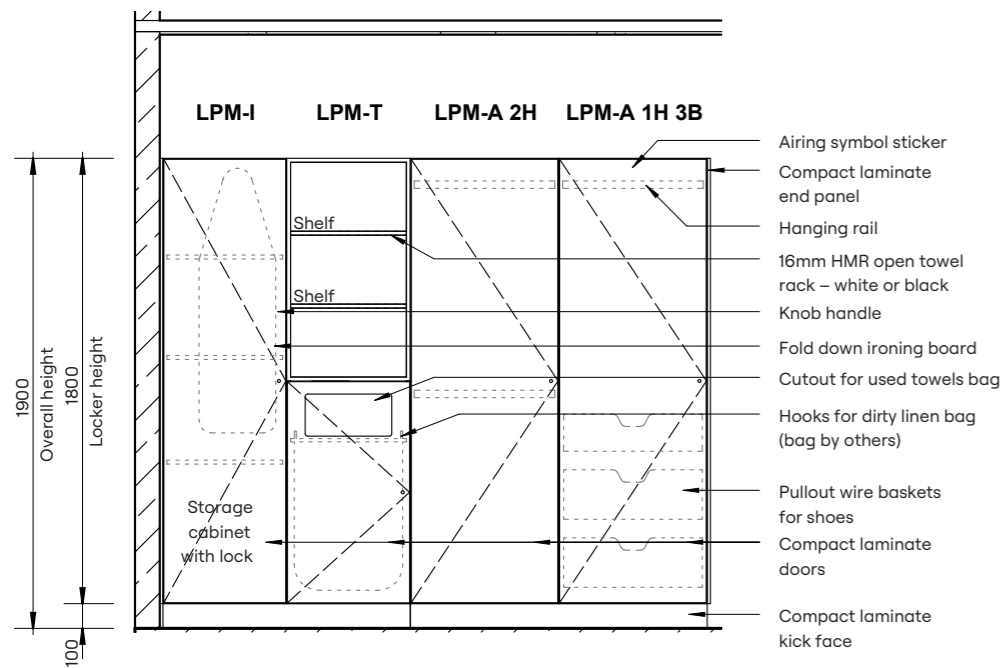
Lockers – Plinth Mounted End-of-Trip (LPM-EOT)



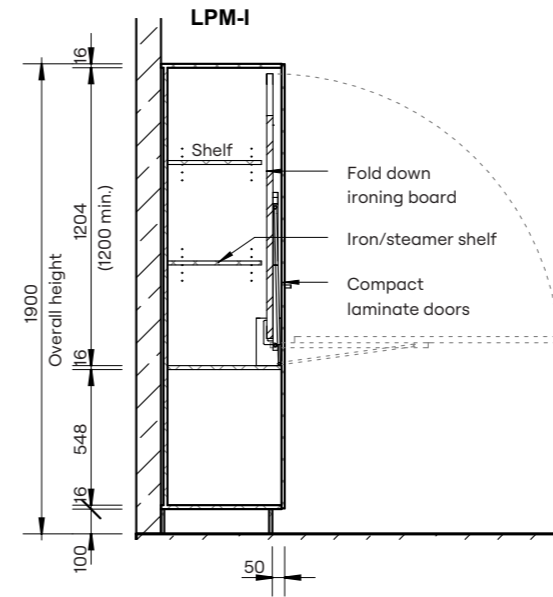
HOW TO SPECIFY	
<b>Product</b>	DuraCube locker systems – plinth mounted end-of-trip (LPM-EOT)
<b>Door and Panel Construction Material</b>	DuraSafe 13mm compact laminate
<b>Internal Carcass Construction Material</b>	Select either: Dry area lockers – white or black 16mm HMR board Wet area lockers – white 16mm PVC board
<b>Lock</b>	Select lock option here – see page 50



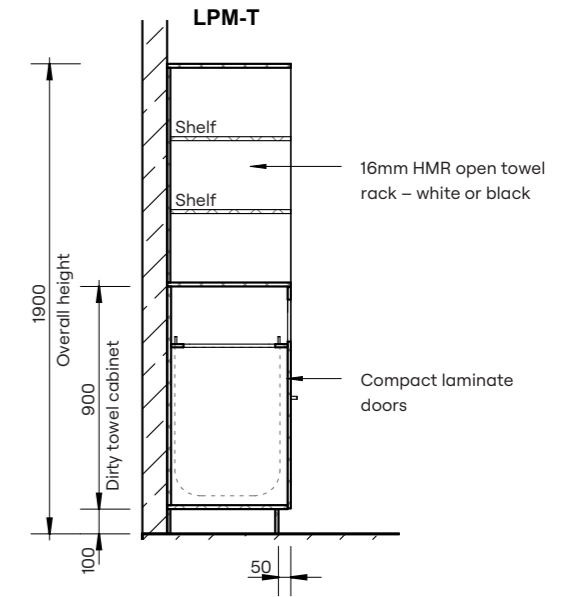
Plan



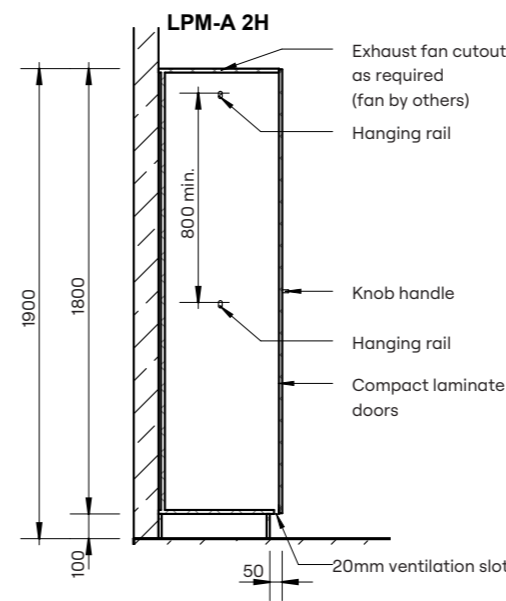
Elevation



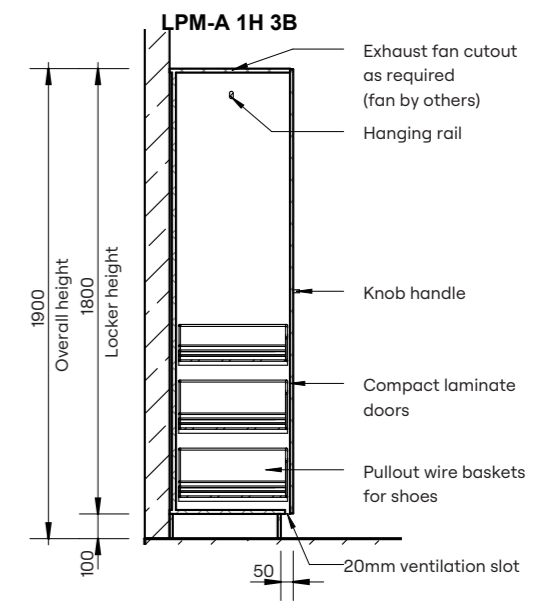
Section



Section



Section



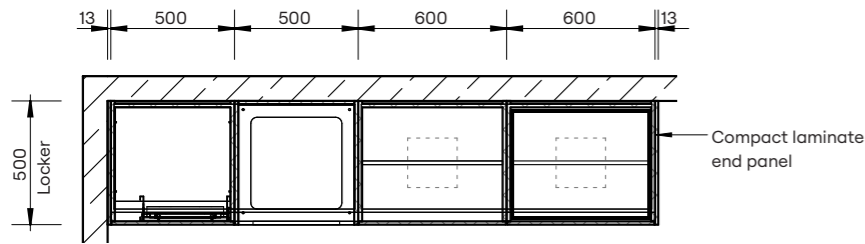
Section



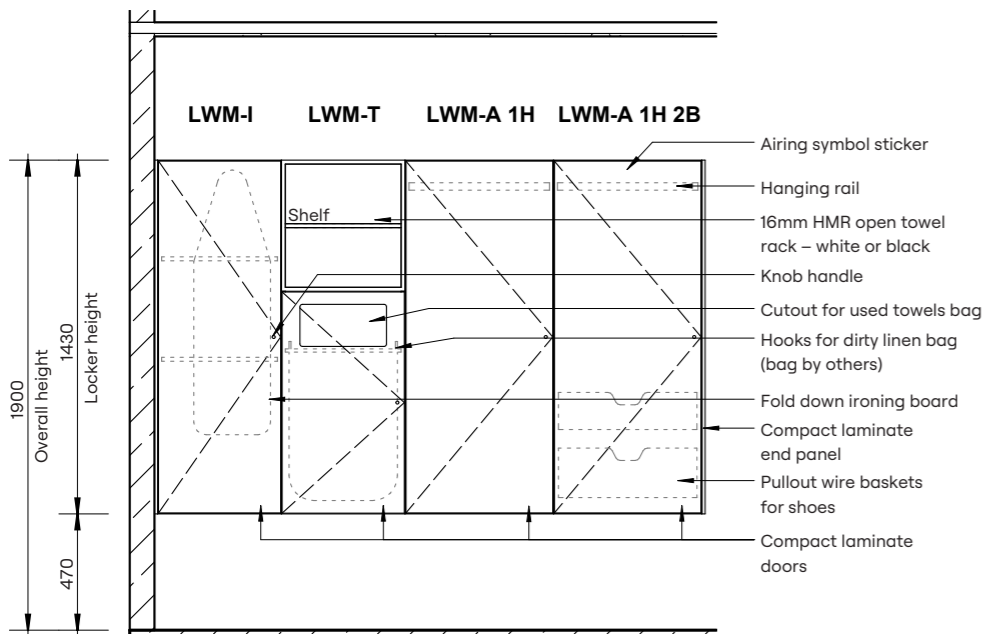
Lockers – Wall Mounted End-of-Trip (LWM-EOT)



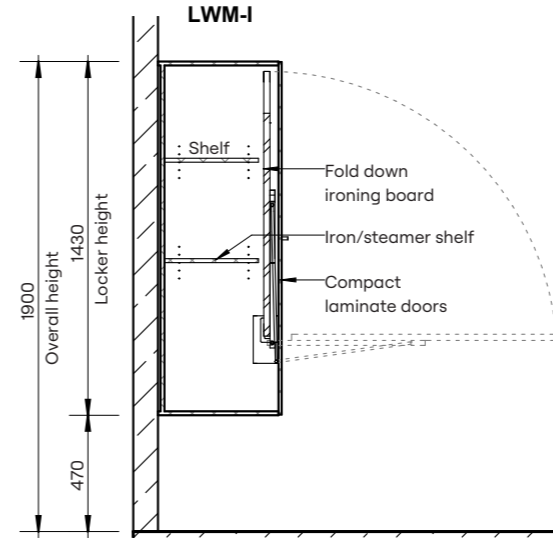
HOW TO SPECIFY	
<b>Product</b>	DuraCube locker systems – wall mounted end-of-trip (LWM-EOT)
<b>Door and Panel Construction Material</b>	DuraSafe 13mm compact laminate
<b>Internal Carcass Construction Material</b>	Select either: Dry area lockers – white or black 16mm HMR board Wet area lockers – white 16mm PVC board
<b>Lock</b>	Select lock option here – see page 50



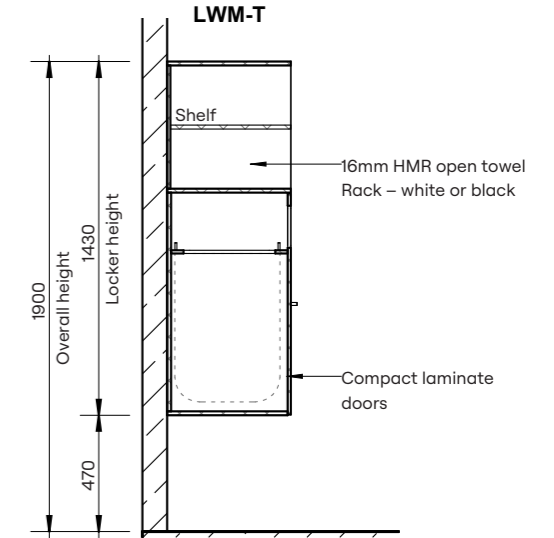
Plan



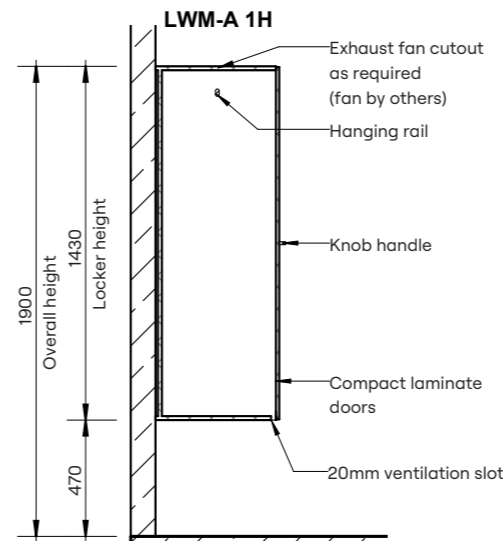
Elevation



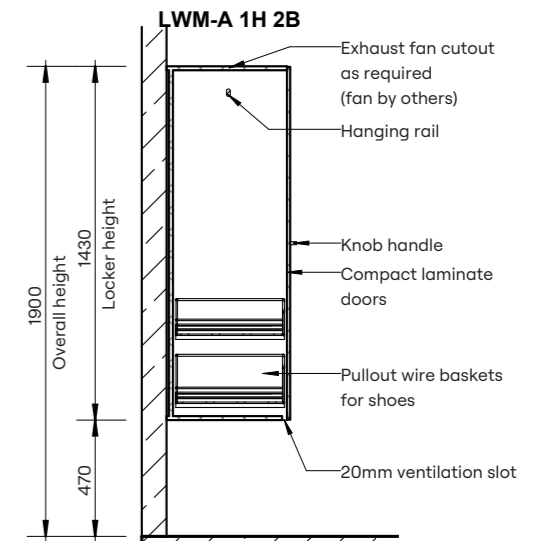
Section



Section



Section



Section



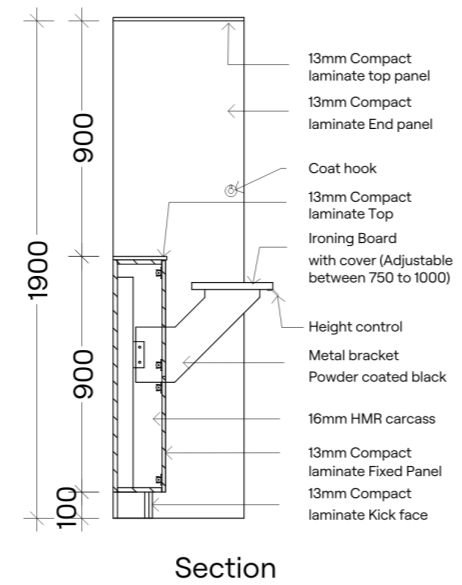
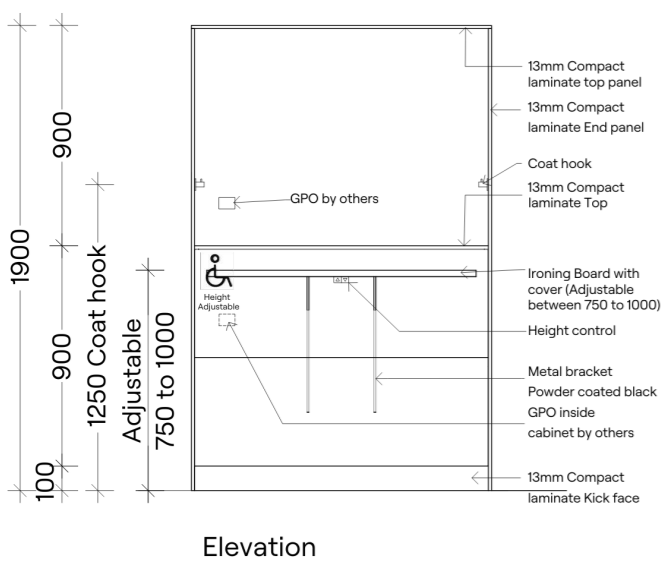
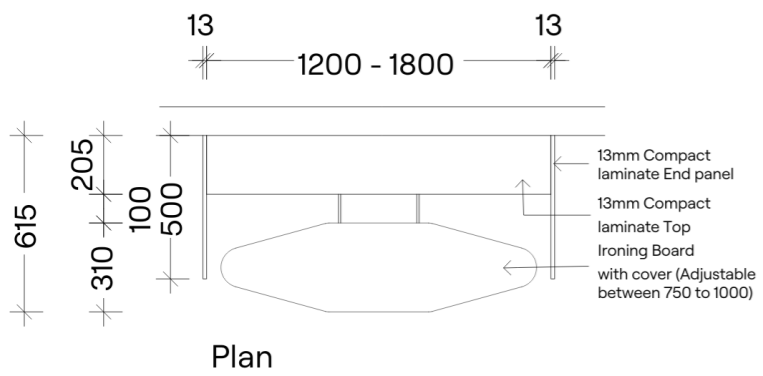
DuraSafe 5333 Southern Pine, and DuraSafe 111 Arctic White



Lockers – Accessible Ironing Station (AIS)



HOW TO SPECIFY
<b>Product</b> DuraCube locker systems - accessible ironing station (AIS)
<b>Door and Panel Construction Material</b> DuraSafe 13mm compact laminate
<b>Internal Carcass Construction Material</b> Select either: Dry area lockers – white or black 16mm HMR board Wet area lockers – white 16mm PVC board



DuraSafe 5394 Washed Acacia

# SECTION 4

# BENCH SEATING

Overview	64
Bench Seating – Island (BSI)	66
Bench Seating – Wall with Shelving (BSW-S)	67
Bench Seating – Wall with Coat Rail (BSW-C)	68
Bench Seating – Shoe Box Island (SBI)	69
Bench Seating – Shoe Box Wall with Shelving (SBW-S)	71
Bench Seating – Shoe Box Wall with Coat Rail (SBW-C)	72





DuraSafe 275 Classic Grey and DuraSafe 5003 Philippine Teak

DuraCube bench seating is constructed from DuraSafe 13mm compact laminate making it robust and durable for heavy-duty applications.

The benches are designed to coordinate with lockers and partitioning systems.

A practical, low maintenance and modern design, the bench seating is ideal for various wet areas.

**APPLICATIONS**

- Schools and universities
- End-of-trip facilities
- Sport and gym change rooms
- Recreational amenities
- Aquatic centres
- Factory change rooms
- Corporate amenities
- Childcare centres

**FEATURES & BENEFITS**

- DuraSafe 13mm compact laminate construction
- Vandal and impact-resistant surface
- Suitable for wet areas that are hose cleaned
- Low maintenance, easy to clean and sanitise
- Sturdy Oyster Grey powder-coat frames and legs
- Available in island or wall fixed configurations or combined with lockers.
- Coat hooks with rail or shelving is a standard inclusion and installed above bench seating
- A range of compact laminate colours are available
- Most cost-effective when designed in 1200mm and 1800mm lengths

**Bench Seating – Island (BSI)**



**HOW TO SPECIFY**

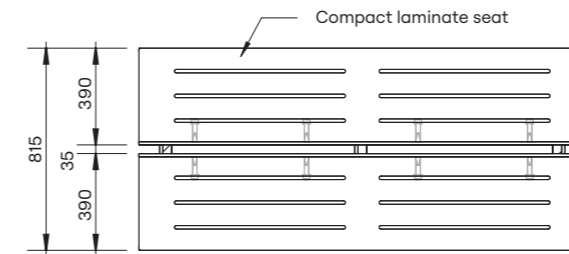
**Product**  
DuraCube bench seating – island (BSI)

**Bench Seat Construction Material**  
DuraSafe 13mm compact laminate

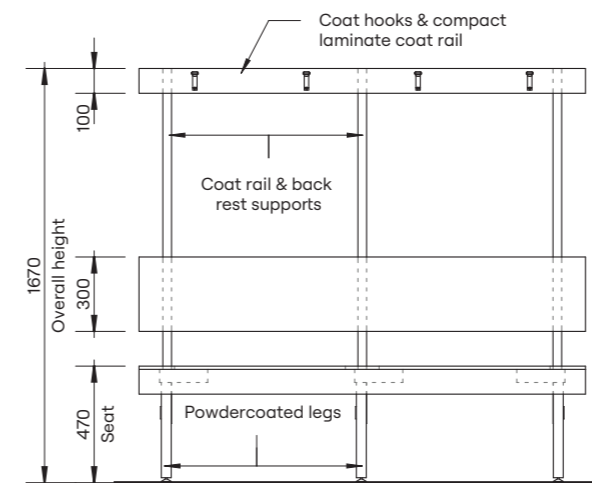
**Coat Rail and Back Rest Supports**  
DuraSafe 13mm compact laminate

**Bench Seat Legs**  
Steel leg – Pearl Grey powder coat

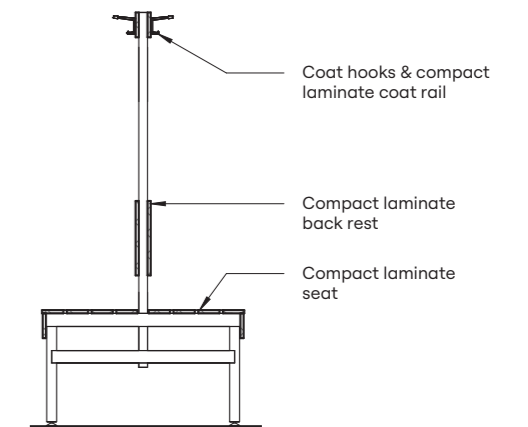
**Frame Finish**  
Steel posts – Pearl Grey powder coat



**Plan**



**Elevation**



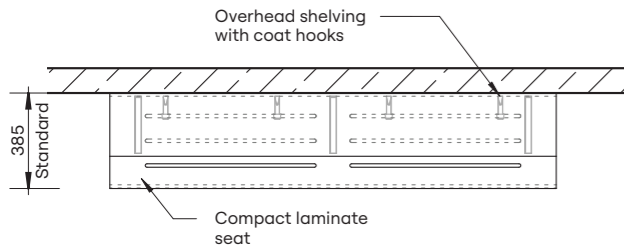
**Section**



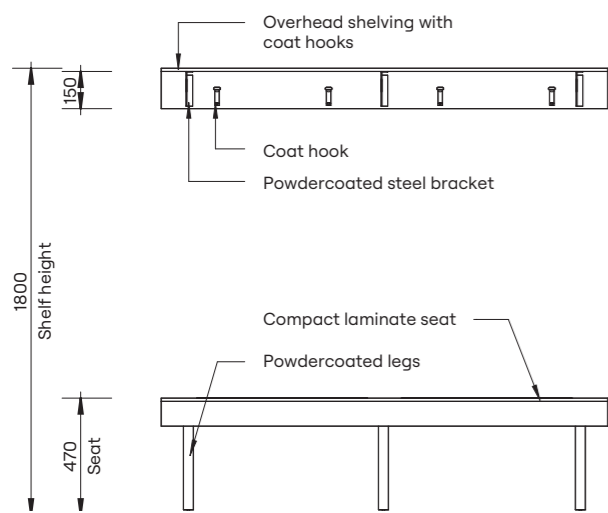
**Bench Seating – Wall with Shelving (BSW-S)**



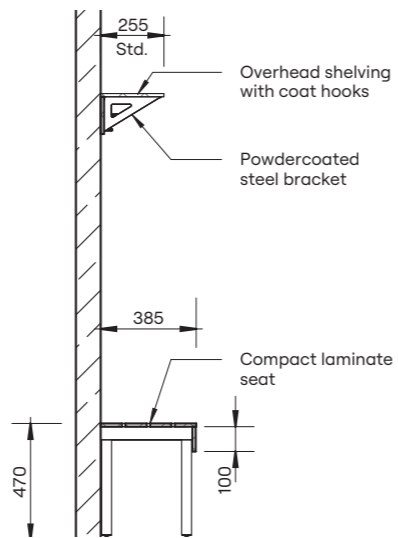
HOW TO SPECIFY	
<b>Product</b>	DuraCube bench seating – wall with shelving (BSW-S)
<b>Bench Seat Construction Material</b>	DuraSafe 13mm compact laminate
<b>Shelving</b>	DuraSafe 13mm compact laminate
<b>Shelf Bracket</b>	Bracket – Oyster Grey powder coat
<b>Bench Seat Legs</b>	Steel leg – Pearl Grey powder coat



Plan



Elevation

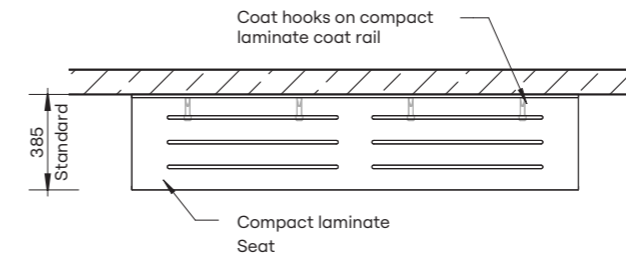


Section

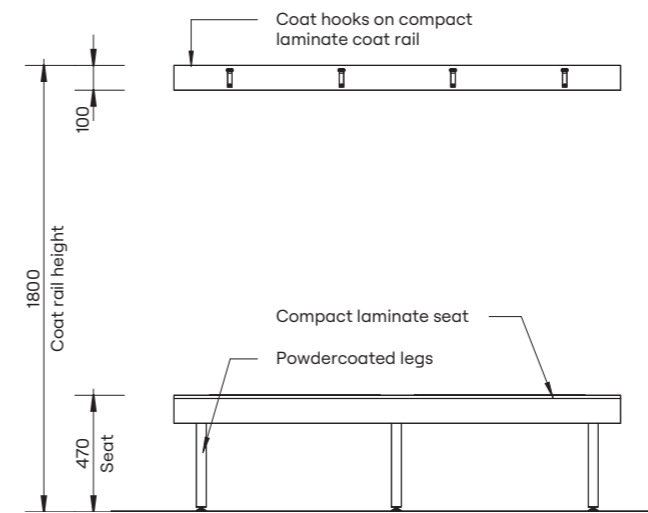
**Bench Seating – Wall with Coat Rail (BSW-C)**



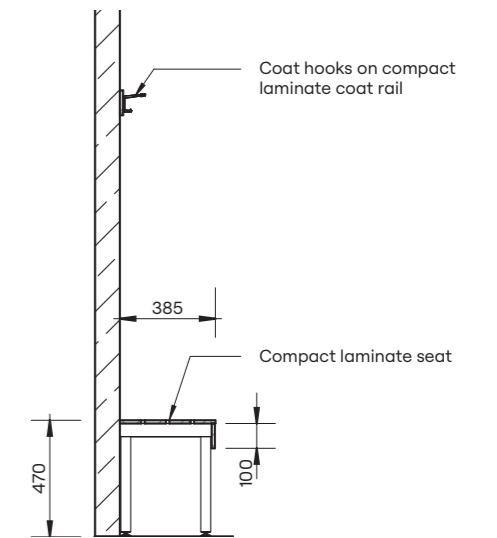
HOW TO SPECIFY	
<b>Product</b>	Bench seating – wall with coat rail (BSW-C)
<b>Bench Seat Construction Material</b>	DuraSafe 13mm compact laminate
<b>Coat Rail</b>	DuraSafe 13mm compact laminate
<b>Bench Seat Legs</b>	Steel leg – Pearl Grey powder coat



Plan



Elevation



Section



**Bench Seating – Shoe Box Island (SBI)**

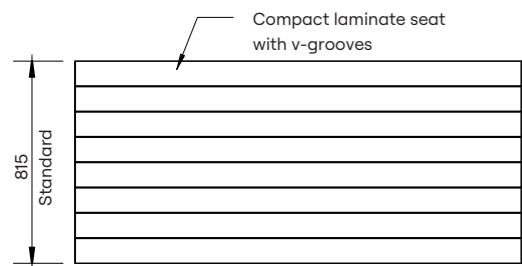


**HOW TO SPECIFY**

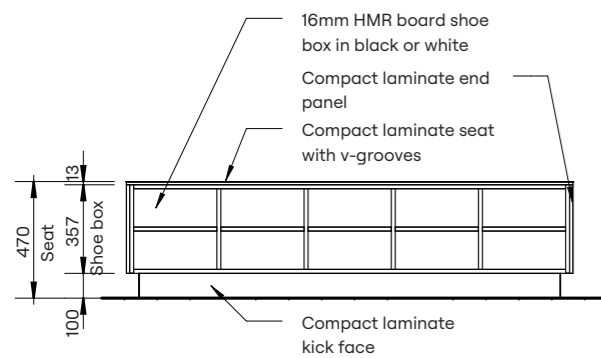
**Product**  
DuraCube bench seating – shoe box island (SBI)

**Bench Seat Construction Material**  
DuraSafe 13mm compact laminate

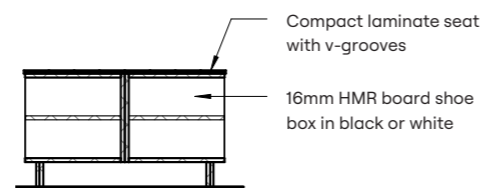
**Internal Carcass Construction Material**  
Select either:  
Dry area lockers – white or black 16mm HMR board  
Wet area lockers – white 16mm PVC board



**Plan**



**Elevation**



**Section**

**Bench Seating – Shoe Box Wall with Shelving (SBW-S)**

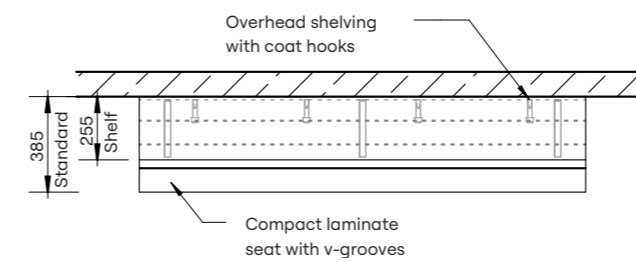


**HOW TO SPECIFY**

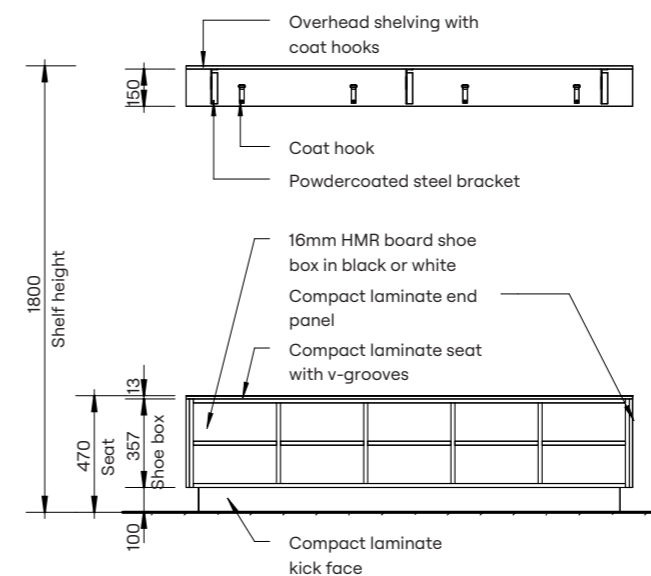
**Product**  
DuraCube bench seating – shoe box island with shelving (SBW-S)

**Bench Seat Construction Material**  
DuraSafe 13mm compact laminate

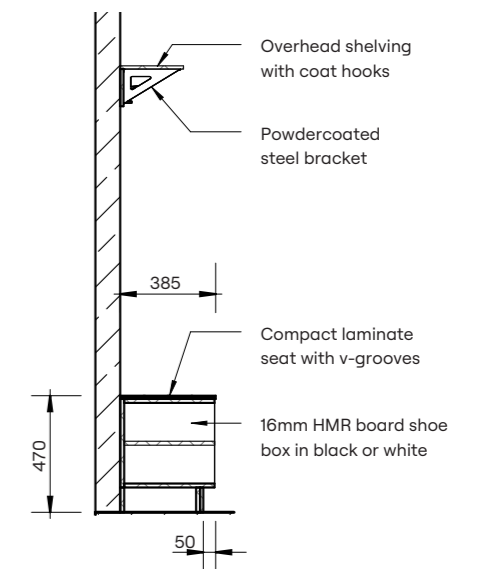
**Internal Carcass Construction Material**  
Select either:  
Dry area lockers – white or black 16mm HMR board  
Wet area lockers – white 16mm PVC board



**Plan**



**Elevation**



**Section**



**Bench Seating – Shoe Box Wall with Coat Rail (SBW-C)**

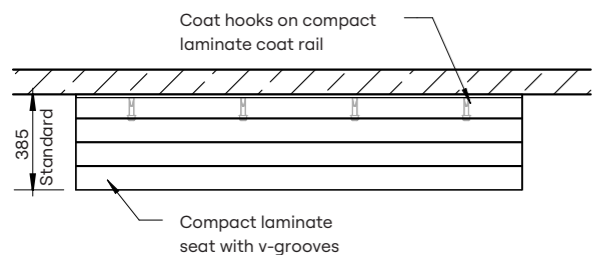


**HOW TO SPECIFY**

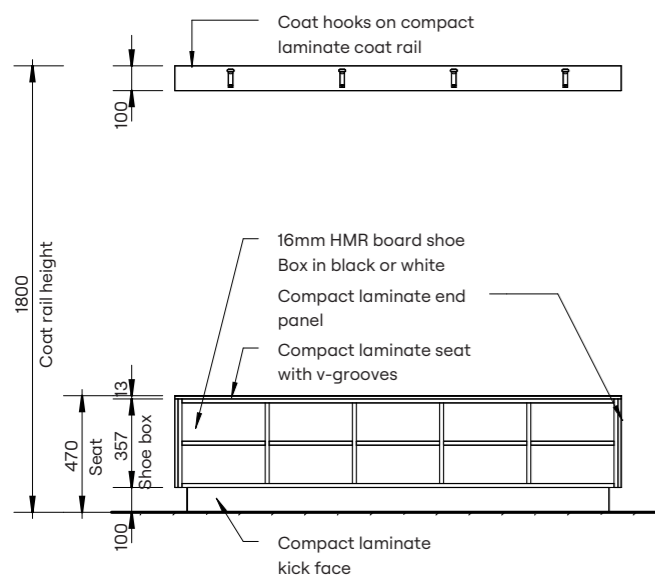
**Product**  
DuraCube bench seating – shoe box wall with coat rail (SBW-C)

**Bench Seat Construction Material**  
DuraSafe 13mm compact laminate

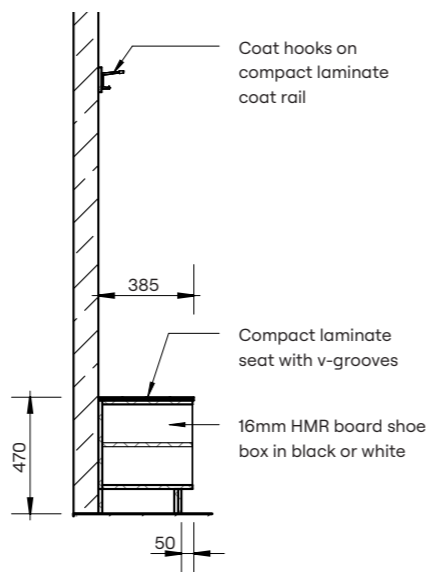
**Internal Carcass Construction Material**  
Select either:  
Dry area lockers – white or black 16mm HMR board  
Wet area lockers – white 16mm PVC board



**Plan**



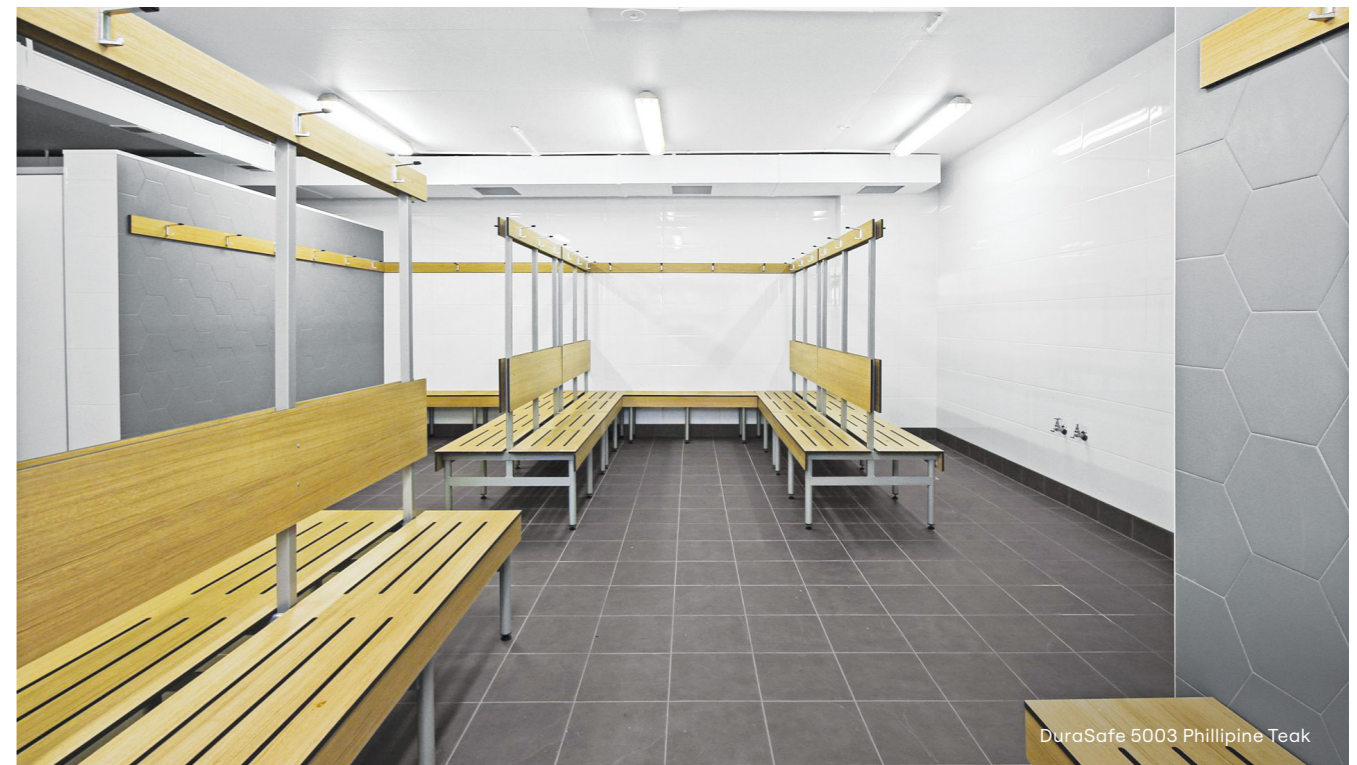
**Elevation**



**Section**



DuraSafe 279 Charcoal



DuraSafe 5003 Phillipine Teak

# SECTION 5

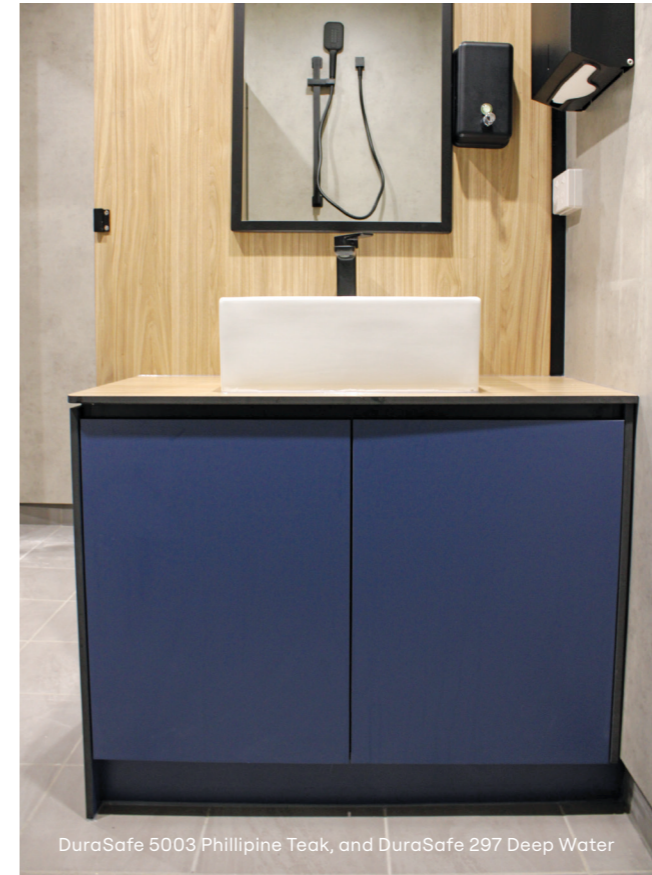
## VANITIES

Overview	76
Vanity Bench – Inset (VB520)	78
Vanity Bench – Semi-Recessed (VB350)	79
Vanity Cabinet – Semi-Recessed (VCWM520)	80
Vanity Cabinet – Semi-Recessed (VCWM350)	81

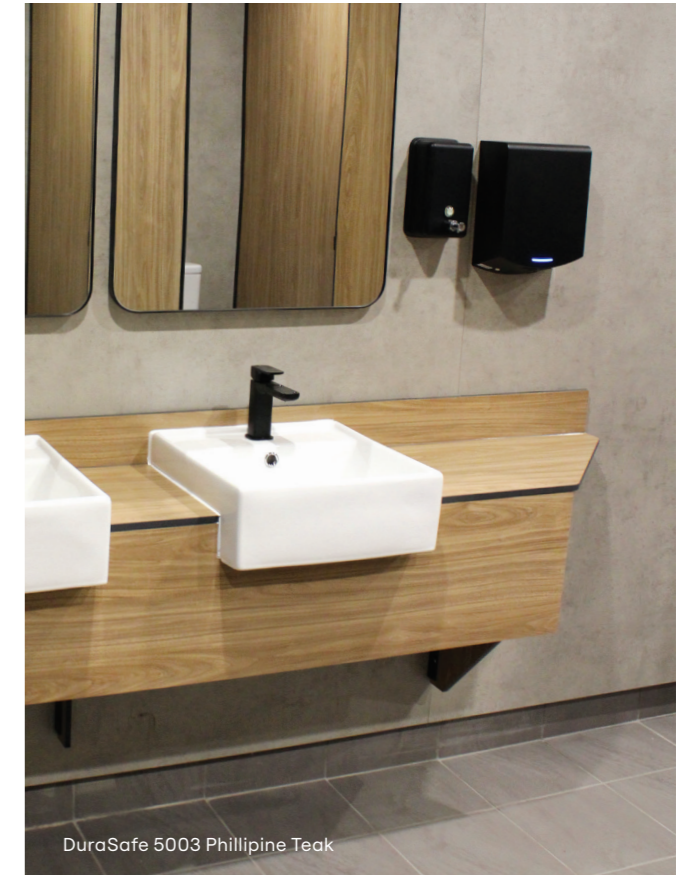




DuraSafe 5578 Slate, and DuraSafe 464 Barrier Reef



DuraSafe 5003 Phillipine Teak, and DuraSafe 297 Deep Water



DuraSafe 5003 Phillipine Teak

**DuraCube vanity benches are made to measure and precut ready for quick on-site installation.**

A large range of compact laminate colours are available to complement the partitioning system.

DuraCube compact laminate is antiviral, antifungal and antibacterial. It's the ideal surface for vanity benches in any commercial wet area.

**APPLICATIONS**

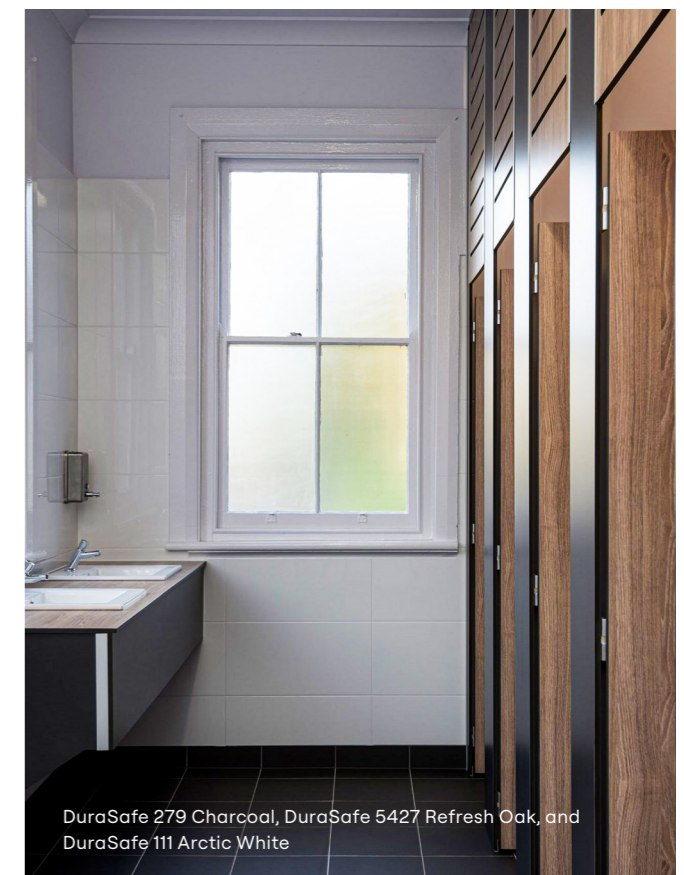
- Schools and universities
- End-of-trip facilities
- Shopping centres
- Sport and gym change rooms
- Defence ablution blocks
- Corporate amenities
- Recreational amenities
- Entertainment centres
- Childcare centres

**FEATURES & BENEFITS**

- DuraSafe 13mm compact laminate construction
- Basin can be inset or semi-recessed
- Prefabricated vanity with basin cut-out reduces installation time on-site
- Waterproof compact laminate ensures no swelling when in contact with water
- Compact laminate bench will coordinate with partitioning system
- Cost-effective alternative to engineered stone and natural stone benchtop
- A large range of compact laminate colours are available in stock
- Available as a vanity bench or vanity cabinet



DuraSafe 5003 Phillipine Teak



DuraSafe 279 Charcoal, DuraSafe 5427 Refresh Oak, and DuraSafe 111 Arctic White



Vanity Bench – Inset (VB520)

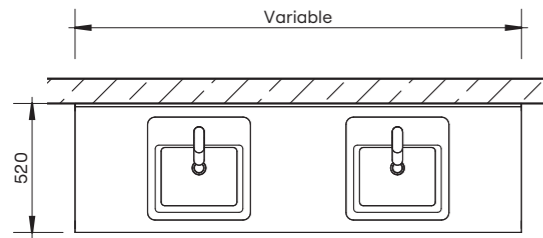


HOW TO SPECIFY	
<b>Product</b>	DuraCube vanity bench – Inset (VB520)
<b>Vanity Bench Construction Material</b>	DuraSafe 13mm compact laminate
<b>Wall Fixing</b>	DuraCube custom bracket

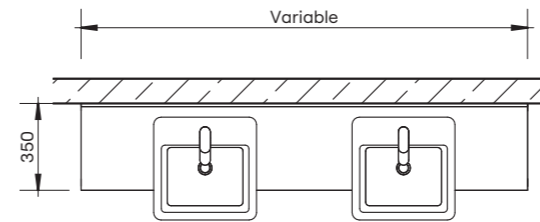
Vanity Bench – Semi-Recessed (VB350)



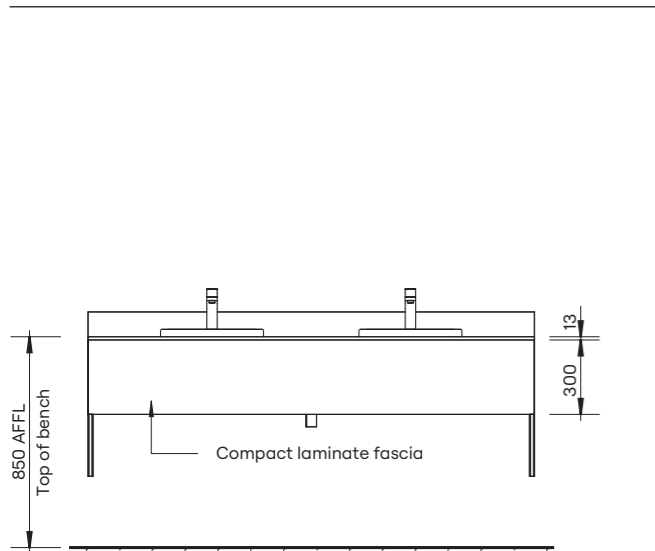
HOW TO SPECIFY	
<b>Product</b>	DuraCube vanity bench – semi-recessed (VB350)
<b>Vanity Bench Construction Material</b>	DuraSafe 13mm compact laminate
<b>Wall Fixing</b>	DuraCube custom bracket



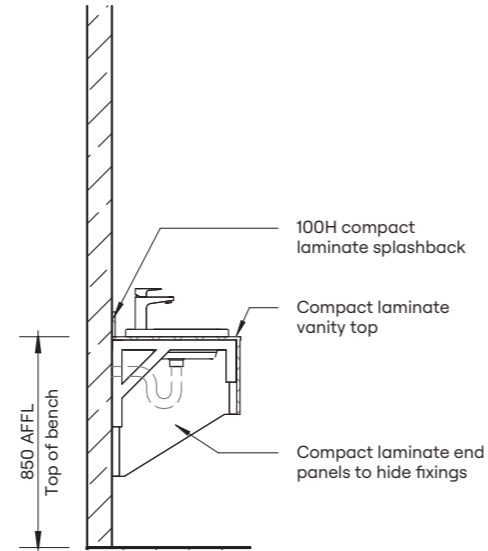
Plan



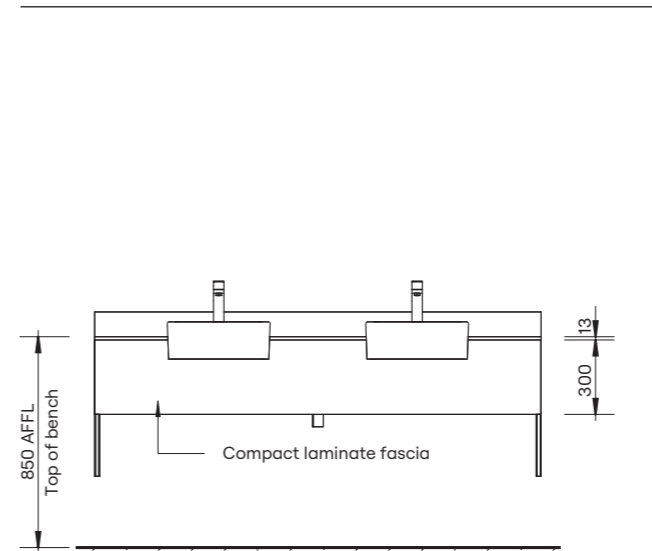
Plan



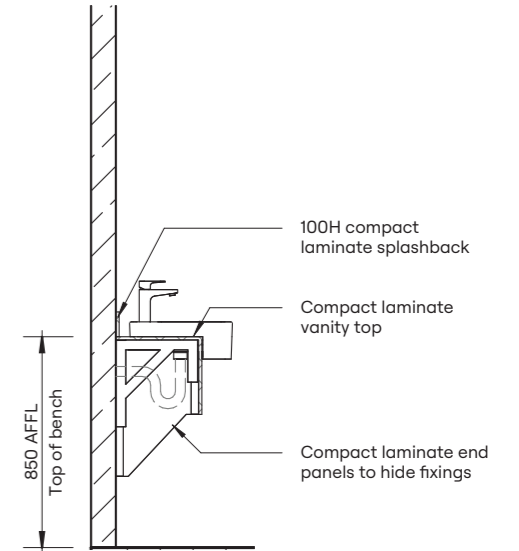
Elevation



Section



Elevation



Section

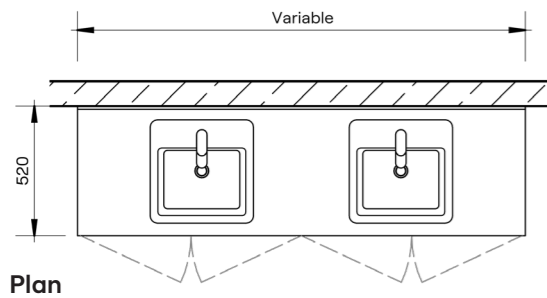


Vanity Cabinet – Inset (VCWM520)

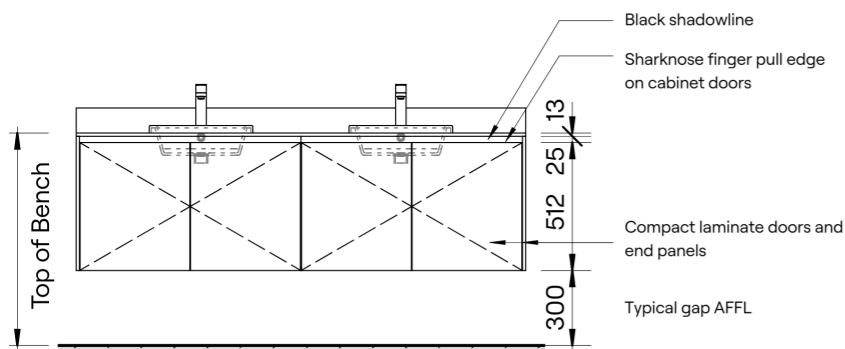


HOW TO SPECIFY	
<b>Product</b>	DuraCube vanity bench – Inset (VCWM520)
<b>Vanity Bench Construction Material</b>	DuraSafe 13mm compact laminate
<b>Wall Fixing</b>	DuraCube custom bracket

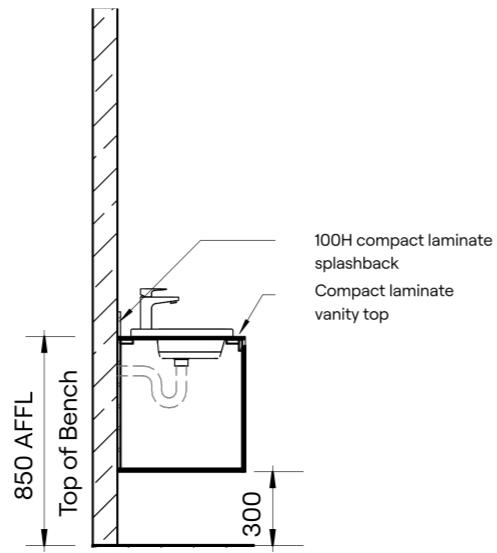
Note: Plinth Mounted version also available.



Plan



Elevation



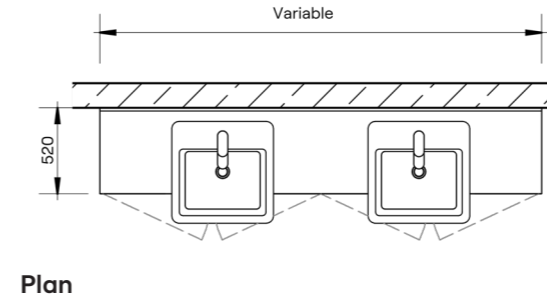
Section

Vanity Cabinet – Semi-Recessed (VCWM350)

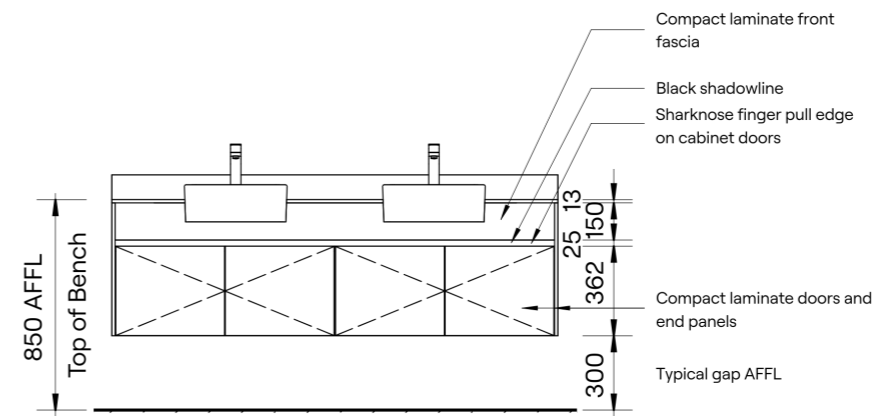


HOW TO SPECIFY	
<b>Product</b>	DuraCube vanity bench – semi-recessed (VCWM350)
<b>Vanity Bench Construction Material</b>	DuraSafe 13mm compact laminate
<b>Wall Fixing</b>	DuraCube custom bracket

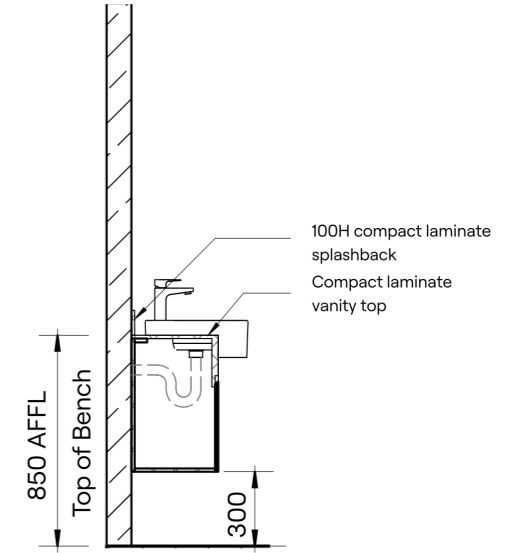
Note: Plinth Mounted version also available.



Plan



Elevation



Section

# SECTION 6

## DURASAFE COMPACT LAMINATE

Overview	84
Colour Range	85
Cut to Size Service	86





DuraSafe 5003 Phillipine Teak, DuraSafe 5730 Brushed Graphite, and DuraSafe 113 Off White

**DuraSafe Compact Laminate has antiviral, antifungal and antibacterial surface properties ensuring resistance to harmful germs.**

DuraSafe has been tested and certified in an Australian laboratory using an internationally recognised ASTM E1053 test method.

This compact laminate is suitable for outdoor, indoor and heavy duty applications.

DuraSafe is competitively priced compared to other compact laminates on the market.

It is graffiti-resistant and has been tested to ASTM D6578/D 6578M-13 (2018).



**DuraSafe Compact Laminate**  
DuraSafe 13mm compact laminate is antiviral, antifungal and antibacterial, eliminating 99% of common germs. Durable, waterproof, easy to clean, impact and scratch resistant.



**FEATURES & BENEFITS**

- Resistant to harmful germs
- Resistant to abrasion
- Resistant to cigarette burns
- Resistant to water penetration
- Resistant to humidity and high temperatures
- Resistant to harsh cleaning solutions
- Hygienic surface material
- Easy to clean and maintain
- Manufactured adhering to strict safety standards
- All standard colours are stocked in our warehouses and ready for use in your project
- Non-standard colours are not kept in stock and have an additional lead time

**“DuraCube’s commitment to sustainability meets today’s needs without compromising future generations.”**

**Athol Simpson**  
Operations Manager, DuraCube

**Colour Range**

111 Arctic White	113 Off White	275 Classic Grey	268 Evening	279 Charcoal
207 Wattle	138 Red Ochre	467 Jade Mist	243 Sage Green	245 Gum Leaf
464 Barrier Reef	284 Sky	291 Royal Blue	297 Deep Water	401 Midnight
5388 Alpine Ash	5577 Concrete	923 Brushed Grey	5730 Brushed Graphite	5578 Slate
9610 Pure Ash	738 Oak	5394 Washed Acacia	5003 Phillipine Teak	5333 Southern Pine
5353 Rosenheim Elm	5331 Midnight Acacia	5389 Deep Woods	5375 Native Walnut	5427 Refresh Oak

**Please Note:** The colours in this brochure have been recreated as accurately as possible to match the DuraSafe Compact Laminate colours. The colour chart should be used as a guide only. Physical samples of compact laminate colours are available upon request.

**Contact laminate is durable, waterproof, easy to clean and scratch resistant.**



DuraSafe 467 Jade Mist, DuraSafe 275 Classic Grey, and DuraSafe 291 Royal Blue

**DuraSafe Cut to Size Service is the ideal solution for custom designed furniture and joinery including tables, desks, benchtops, doors and wall panels.**

Compact Laminate is extremely durable, waterproof and easy to clean.

The surface is antiviral, antifungal and antibacterial, eliminating 99% of common microorganisms.

DuraCube has four CNC machines dedicated to cutting compact laminate. We can cut compact laminate to any shape and size within the 3600mm x 1800mm sheet size.

Standard edge profiles are 1.5mm aris top and bottom. Sharknose and square edge profiles are also available.

DuraCube can help save assembly time by pre-drilling holes, routing cut-outs and creating v-grooves at a minimal cost.

**“Let your imagination run free with this totally custom offer.”**

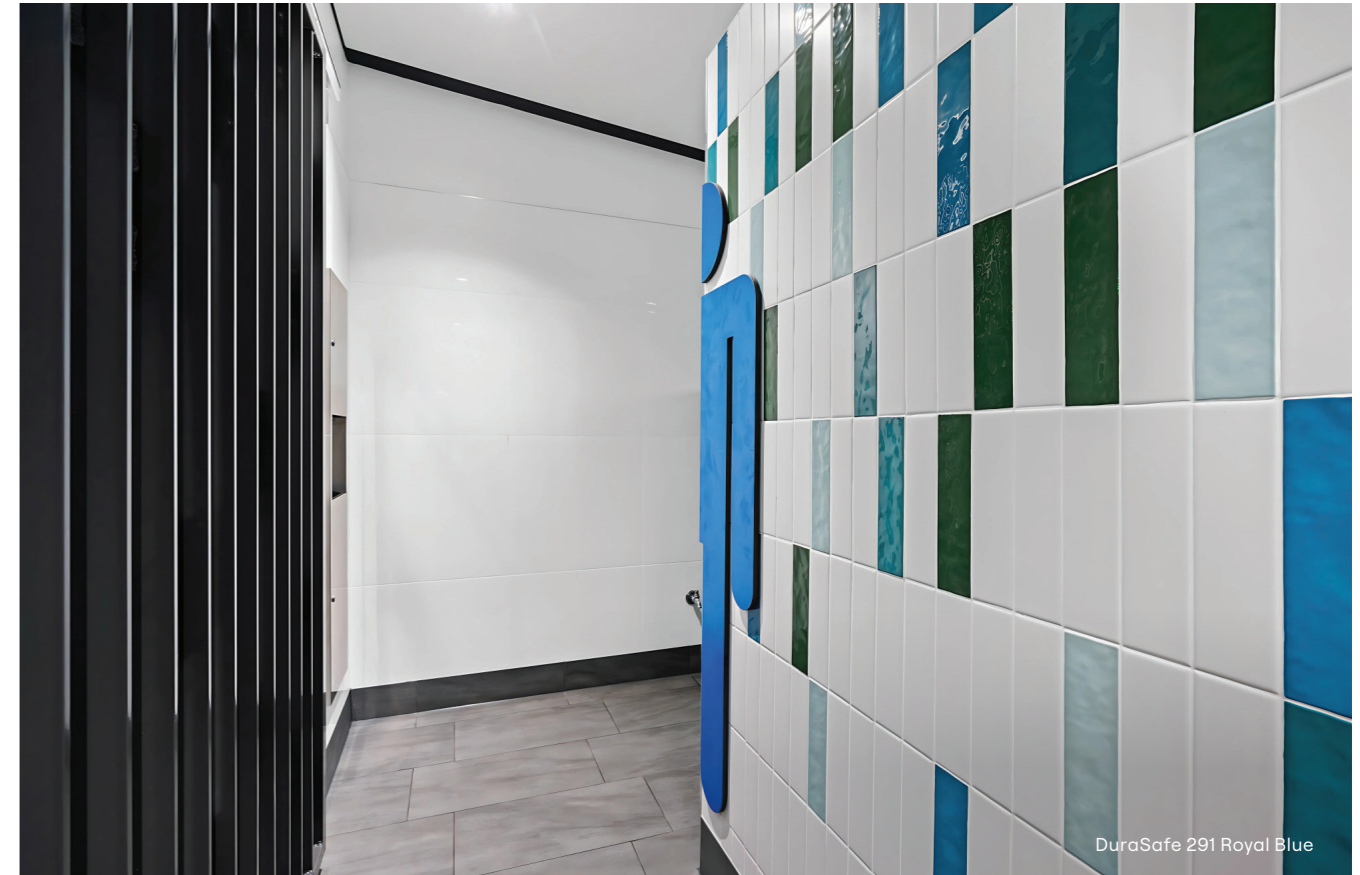
**Alicia Woodbury**  
Sales Support, DuraCube

**APPLICATIONS**

- Cafés, restaurants, bars, alfresco dining
- Childcare centres
- Schools and universities
- Shopping centres
- Corporate breakout areas and lunch rooms
- Health facilities

**FEATURES & BENEFITS**

- DuraSafe 13mm compact laminate construction
- Customised designs to suit your space and style
- Cost-effective dining solution for indoor and outdoor applications
- Black core is polished to enhance the edges and eliminates the need for edge-tapes that peel
- Impact, vandal and graffiti-resistant material
- Waterproof material that does not swell when wet
- Easy to clean and maintain
- Antiviral, antifungal and antibacterial surface prevents germ growth
- Large range of colours are available



DuraSafe 291 Royal Blue



DuraSafe 111 Arctic White

# SECTION 7

## ACCESSORIES / HARDWARE

Accessories	90
Hardware	90-91





## Accessories

### Ambulant Signs



MLS16446 — BLU



MLS16266 — SIL



MLS16266 — BLU



MLS16266 — SIL



MLS16246 — BLU



MLS16446 — SIL

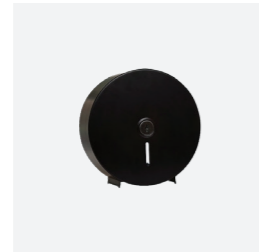
### Toilet Roll Holders



Dispenser ML841-SS



Dispenser ML832-SS



Dispenser ML841-BL



Holder 513TRH-ALUM

### Grab Rails



Ambulant Grab Rail MLR112-SS



Ambulant Grab Rail MLR112-BL

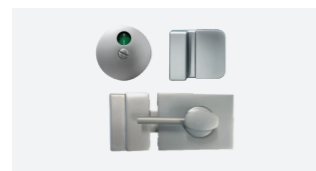
Our accessories and hardware add the finishing touch to any project.

## Hardware

### Viva Satin Chrome (Standard Hardware)



Standard Lock, Indicator and Bumper



Ambulant Lock, Indicator and Bumper



Gravity Hinge (x3 per door)

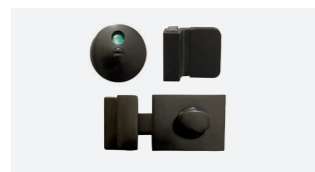


Ambulant D Handle



Coat Hook with Door Stop

### Viva Black (Optional Hardware)



Standard Lock, Indicator and Bumper



Ambulant Lock, Indicator and Bumper



Gravity Hinge (x3 per door)



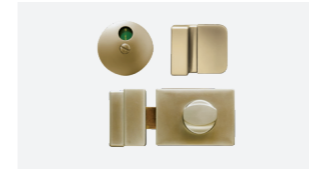
Ambulant D Handle



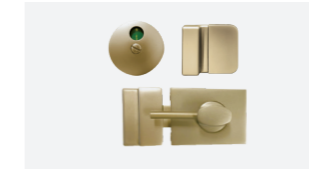
Coat Hook with Door Stop

## Hardware

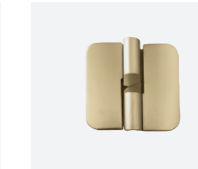
### Viva Brass (Optional Hardware)



Standard Lock, Indicator and Bumper



Ambulant Lock, Indicator and Bumper



Gravity Hinge (x3 per door)

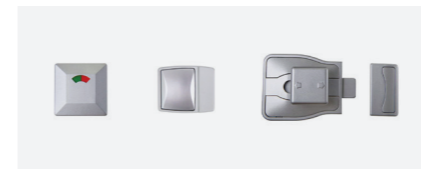


Ambulant D Handle



Coat Hook with Door Stop

### Zetlan Satin Chrome (Optional Hardware)



Standard Lock, Indicator and Bumper



Gravity Hinge (x3 per door)



Ambulant D Handle

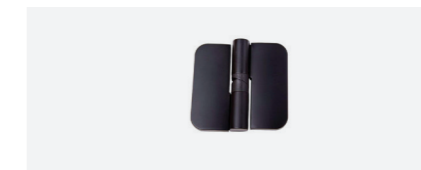


Coat Hook with Door Stop

### Zetlan Black (Optional Hardware)



Standard Lock, Indicator and Bumper



Gravity Hinge (x3 per door)



Ambulant D Handle



Coat Hook with Door Stop

### Bolt Through Cover Plates



### Pedestal Legs



### Aluminium Extrusion Colours



Oyster Grey Matt  
Interpon No: GL258A



Black Satin  
Interpon No: GN150A



Brass Matt  
Dulux Aged Kinetic Brass

## Contact

### Sydney (Head Office)

13 Pullman Place  
Emu Plains NSW 2750

—

### Melbourne

12 Metrolink Circuit  
Campbellfield VIC 3061

*By appointment only*

—

### Brisbane

Unit 3B, 400 Nudgee Road  
Hendra QLD 4011

*By appointment only*

*Trade license number: 15241086*

—

### Adelaide

8 Selgar Avenue  
Clovelly Park SA 5042

*By appointment only*

*Trade license number: BLD307712*

—

**Telephone:** 1300 387 228

**Email:** [sales@duracube.com.au](mailto:sales@duracube.com.au)

### Thank you

Please contact our team  
with any questions about  
your bathroom joinery.



**Bathroom Joinery Systems**  
[DuraCube.com.au](http://DuraCube.com.au)



