

# SECTION 1

# PARTITIONING

# SYSTEMS

Pedestal Mount Overhead Braced (POB)	10
Pedestal Mount Ceiling Fixed (PCF)	14
Floor Mount Overhead Braced (FOB)	18
Floor Mount Ceiling Fixed (FCF)	22
Floor Mount Free Standing (FFS)	26
Full Height Privacy Core (FHPC)	30
Full Height Privacy Ultra (FHPU)	34
Full Height Privacy Max (FHPM)	38





DuraSafe 5003 Phillipine Teak

Our floor mount ceiling fixed wet area partitioning system is designed specifically for use in upmarket corporate applications or anywhere that requires a quality finished bathroom.

The superbly finished, streamlined design makes this system one of our most popular and aesthetically pleasing partitioning systems.

#### REGULATORY COMPLIANCE

- NCC 2022 Part F — Deem to Satisfy Provisions
- F4D82c — Door removable from outside if less than 1.2m between pan and doorway.

#### APPLICATIONS

- Schools and universities
- End-of-trip facilities
- Shopping centres
- Sport and gym change rooms
- Defence ablution blocks
- Corporate amenities
- Recreational amenities
- Pubs and clubs

#### FEATURES & BENEFITS

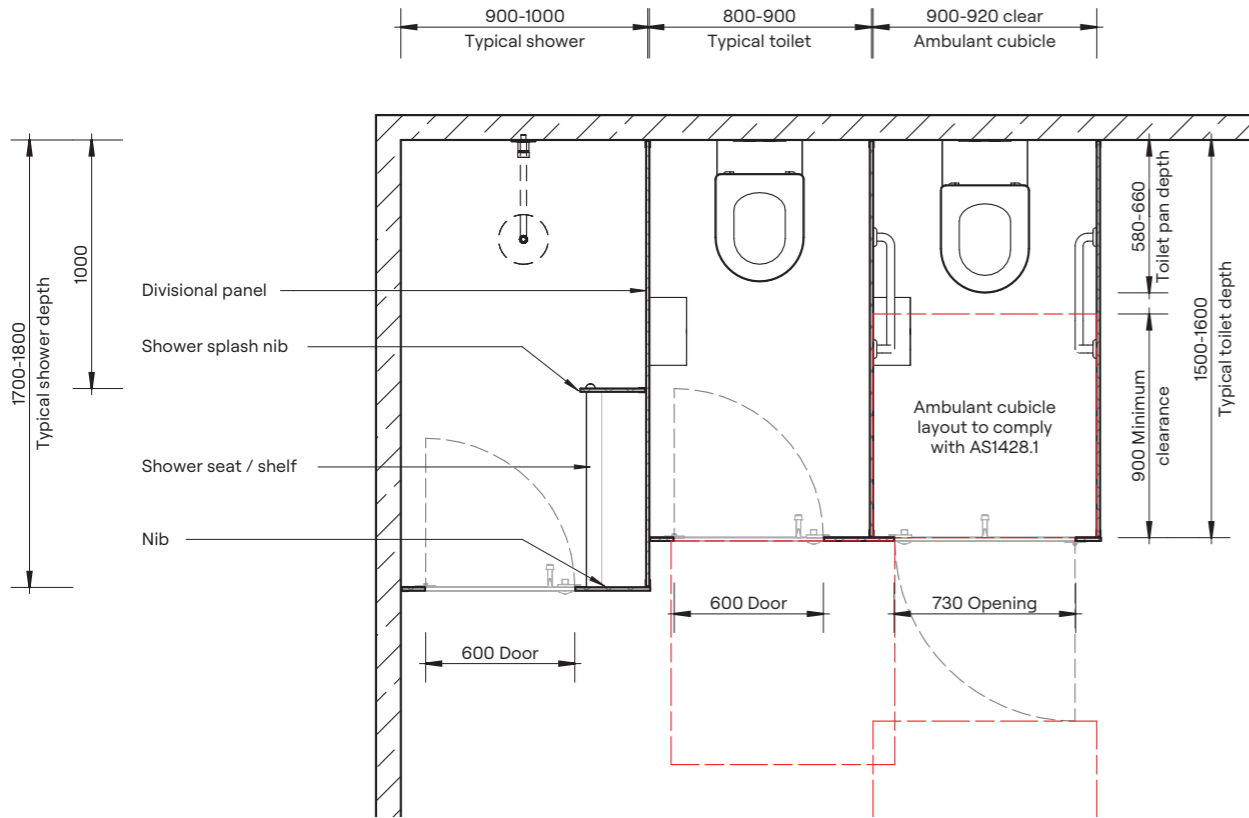
- Nibs mounted to the floor provide stability, strength and durability
- DuraSafe 13mm compact laminate construction
- No edge strip required as compact laminate black core is visible on the edges
- Aesthetically pleasing design with clean lines
- Impact-resistant construction
- Vandal-resistant surface
- Waterproof, suitable for hose cleaning
- Easy to clean and sanitise
- Reduced maintenance time and cost
- Overall system height 2020mm AFFL

**“The floor mount ceiling fixed partitioning system presents a quality, up-market aesthetic through clean lines and the continuity of the finish.”**

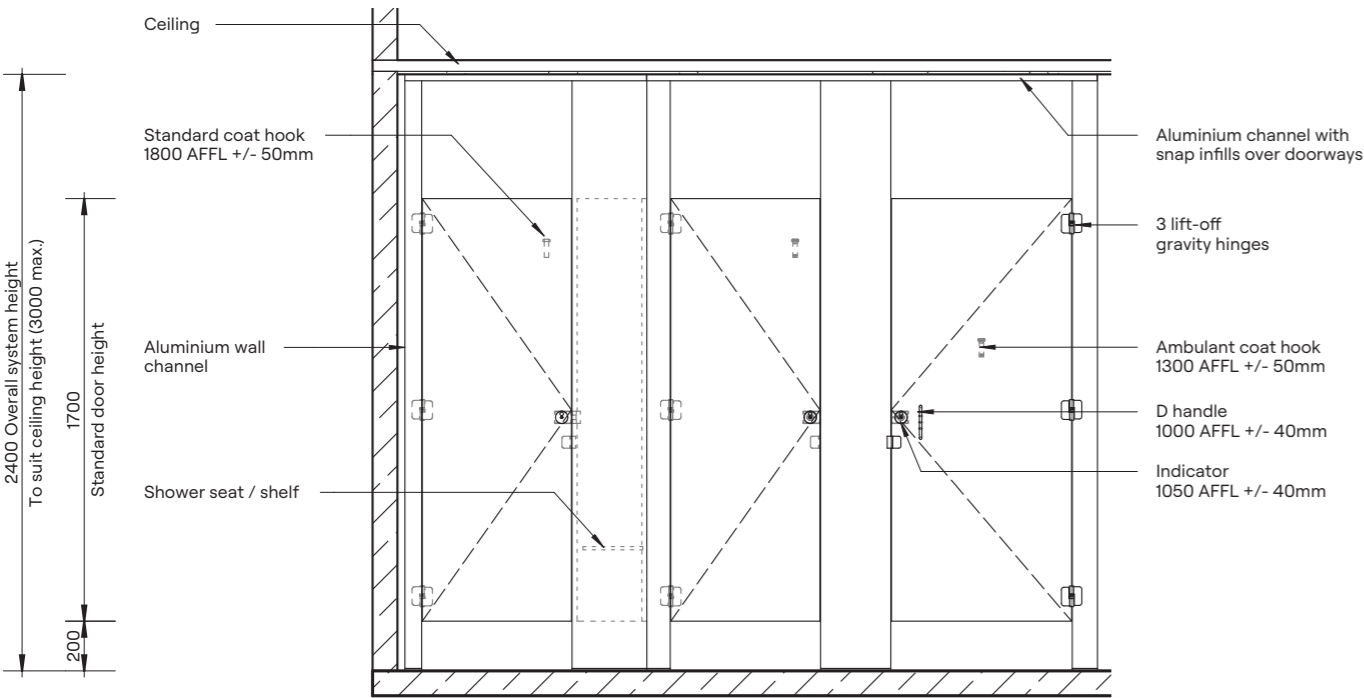
**Ron Simpson**  
Major Projects Manager, DuraCube



**DuraSafe Compact Laminate**  
All DuraCube panels and doors are constructed with DuraSafe 13mm compact laminate.

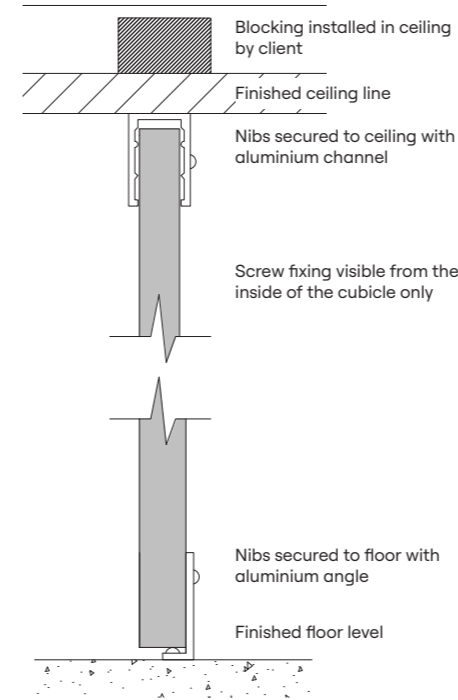


Plan

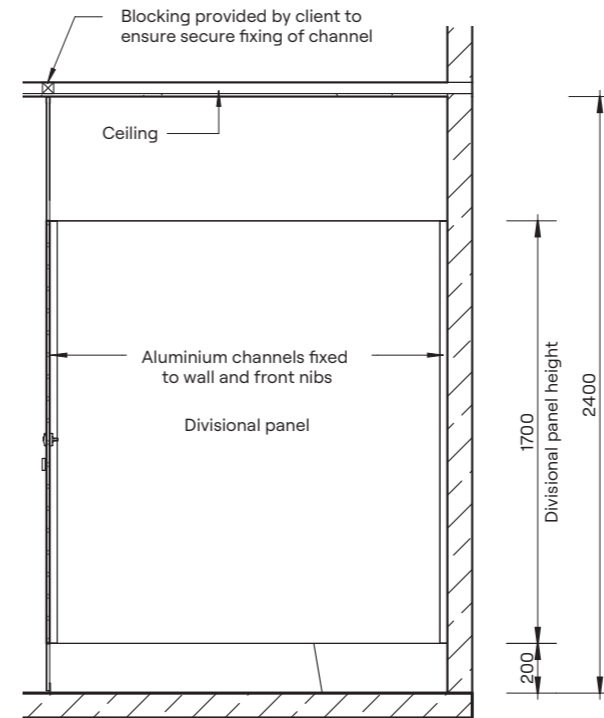


Elevation

Ceiling Fixing Detail



Floor Mounting Detail



Section

**HOW TO SPECIFY**

**Product**  
DuraCube floor mount ceiling fixed (FCF)

**Door and Panel Construction Material**  
DuraSafe 13mm compact laminate

**Hardware**  
Viva satin chrome hardware is standard  
Other hardware is available – see pages 90-91

**Ceiling Fixing**  
Aluminium C channel 20mm x 30mm fixed to the ceiling  
Colour – Oyster Grey powder coat

**Floor Mounting**  
Nib panels fixed with 40mm x 12mm powder coated aluminium flat bar

**Overall System Height**  
2400mm to 3000 AFFL