

SECTION 1

PARTITIONING

SYSTEMS

| | |
|--------------------------------------|----|
| Pedestal Mount Overhead Braced (POB) | 10 |
| Pedestal Mount Ceiling Fixed (PCF) | 14 |
| Floor Mount Overhead Braced (FOB) | 18 |
| Floor Mount Ceiling Fixed (FCF) | 22 |
| Floor Mount Free Standing (FFS) | 26 |
| Full Height Privacy Core (FHPC) | 30 |
| Full Height Privacy Ultra (FHPU) | 34 |
| Full Height Privacy Max (FHPM) | 38 |





Our floor mount overhead braced wet area partitioning system is one of the strongest systems we offer and specifically designed for heavy-duty applications.

Aesthetically pleasing, it is the ideal solution for schools, end-of-trip facilities and high use corporate bathrooms.

REGULATORY COMPLIANCE

- NCC 2022 Part F — Deem to Satisfy Provisions
- F4D82c — Door removable from outside if less than 1.2m between pan and doorway

APPLICATIONS

- Schools and universities
- End-of-trip facilities
- Shopping centres
- Sport and gym change rooms
- Defence ablution blocks
- Corporate amenities
- Recreational amenities
- Pubs and clubs

FEATURES & BENEFITS

- Nibs mounted to the floor provide stability, strength and durability
- DuraSafe 13mm compact laminate construction
- No edge strip required as compact laminate black core is visible on the edges
- Impact-resistant construction
- Vandal-resistant surface
- Waterproof, suitable for hose cleaning
- Easy to clean and sanitise
- Reduced maintenance time and cost
- Overall system height 2020mm AFFL

“The floor mount overhead braced partitioning system is robust, ideal for heavy duty applications, and provides a clean timeless appeal.”

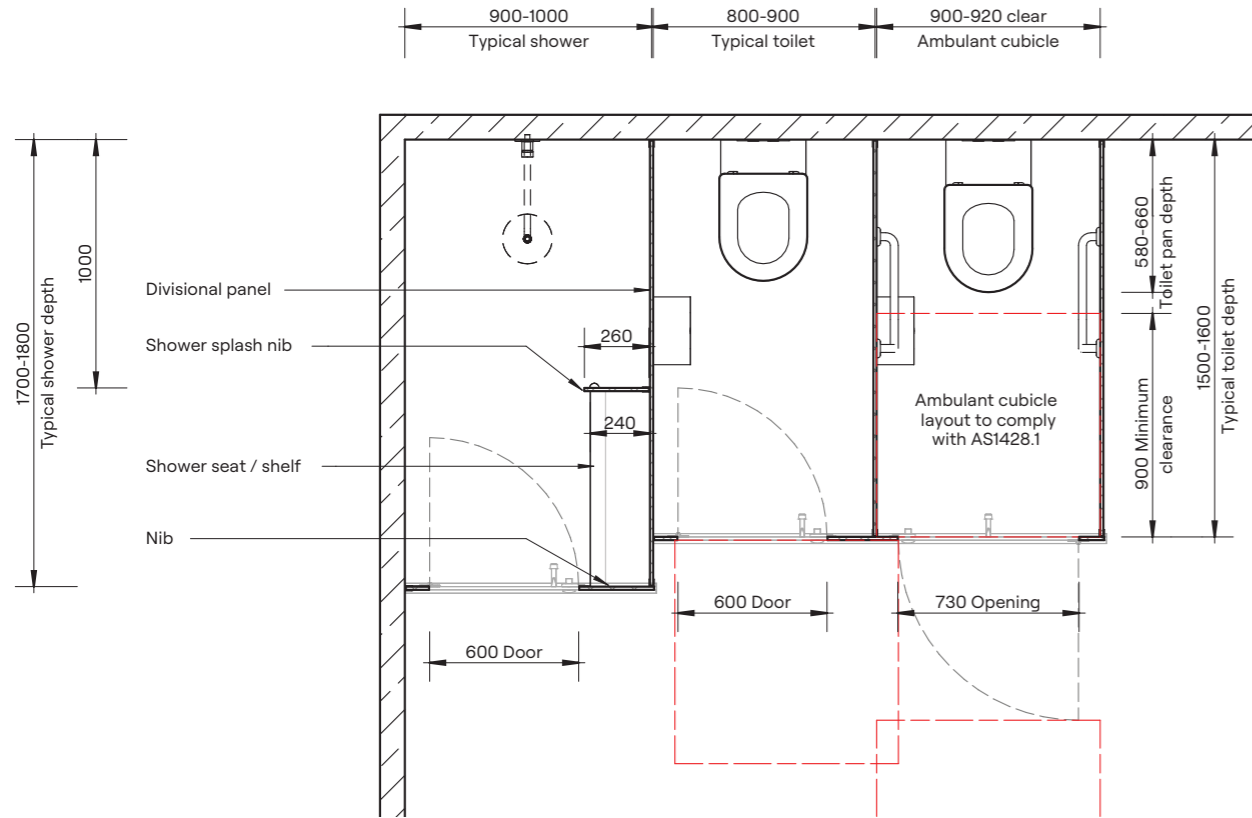
Rick Kennard
Sales Executive, DuraCube



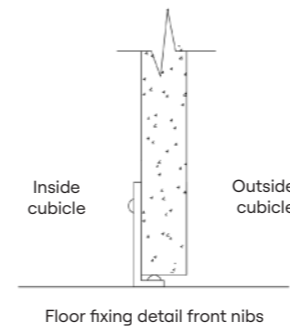
Note: This system is only suitable for installation on a concrete sub-floor. Minimum fixing depth is 100mm. Fixings will penetrate the waterproofing membrane.



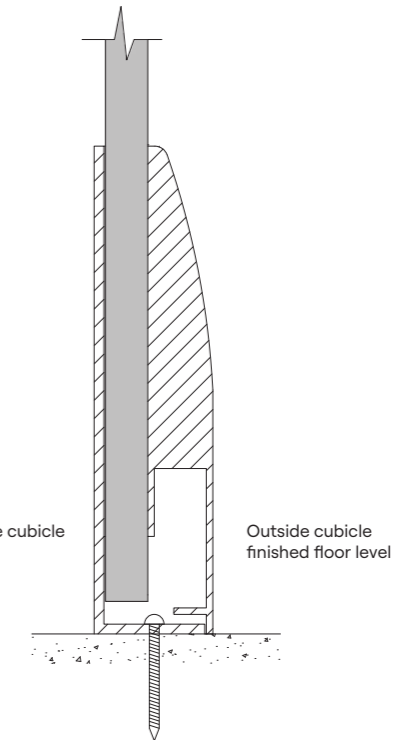
DuraSafe Compact Laminate
All DuraCube panels and doors are constructed with DuraSafe 13mm compact laminate.



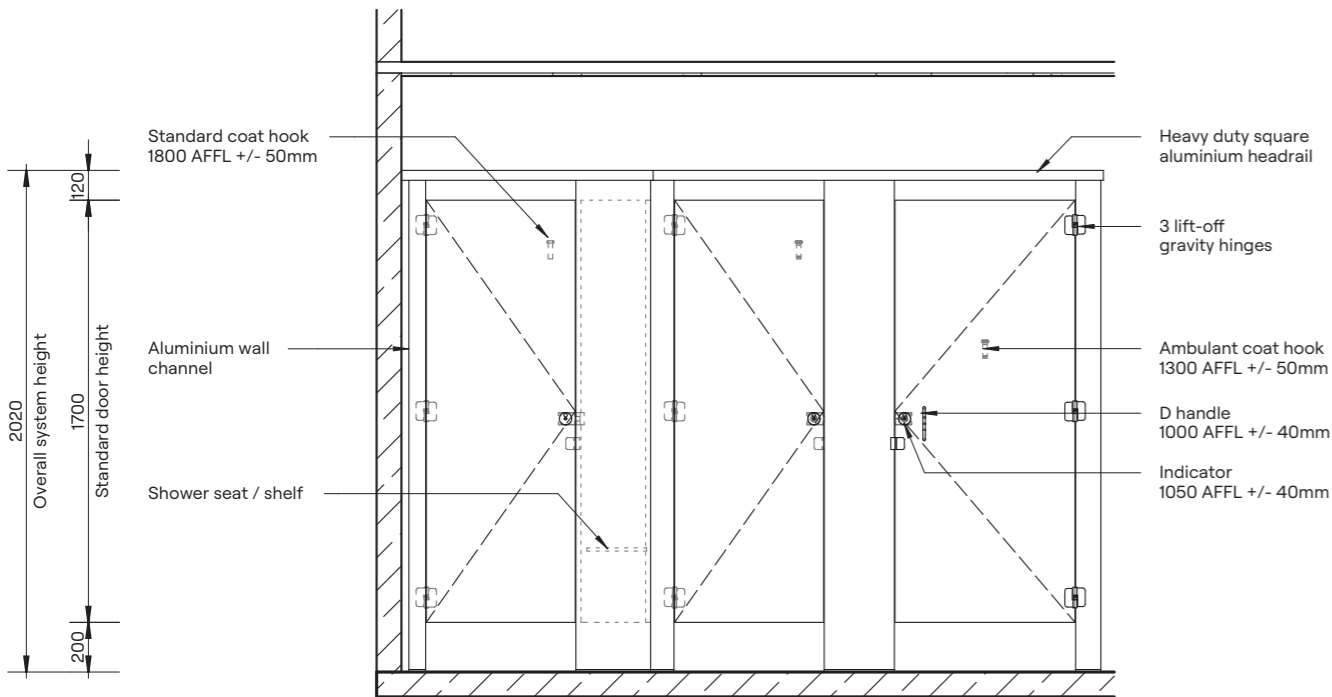
Plan



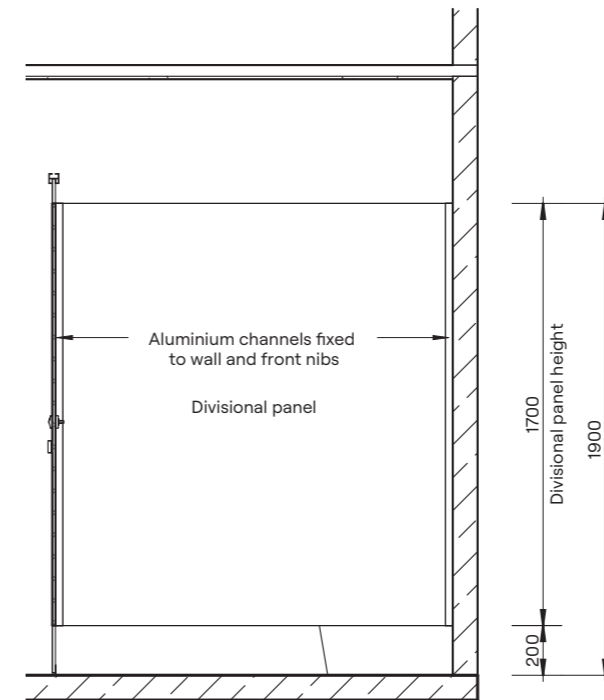
Floor Mounting Detail



Optional 150mm Skirt Mount Detail



Elevation



Section

| HOW TO SPECIFY | |
|---|--|
| Product | DuraCube floor mount overhead braced (FOB) |
| Door and Panel Construction Material | DuraSafe 13mm compact laminate |
| Hardware | Viva satin chrome hardware is standard Other hardware is available – see pages 90-91 |
| Headrail | Aluminium square profile 40mm x 40mm Colour – Oyster Grey powder coat |
| Floor Mounting | Nib panels fixed with 40mm x 12mm powder coated aluminium flat bar or optional skirt mount |
| Overall System Height | 2020mm AFFL |